

B7-H3/CD276 Recombinant Monoclonal Antibody [BLR025F]

Rabbit Recombinant Monoclonal

Purified Protein ID NP_001019907.1
Catalog No. A700-025 GeneID 80381
Lot No. A700-025-1



APPLICATIONS WB, IP, IHC, ICC, IHC-IF, F
SPECIES REACTIVITY Human, Mouse
AMOUNT 100 µl (50+ tests)
CONCENTRATION 1000 µg/ml
STORAGE/SHELF LIFE 2 – 8° C / 1 year from date of receipt
PHYSICAL STATE Liquid
BUFFER Borate Buffered Saline (BBS) pH 8.2 with 0.09% Sodium Azide, BSA Free
ISOTYPE IgG
CLONE # BLR025F
ORIGIN USA
PRODUCTION PROCEDURES Recombinant antibody was purified from cell culture supernatant.

Immunogen was a peptide representing a region between residue 500 and the C-terminus (residue 534) of human CD276 Molecule using the numbering given in entry NP_001019907.1 (GeneID 80381).

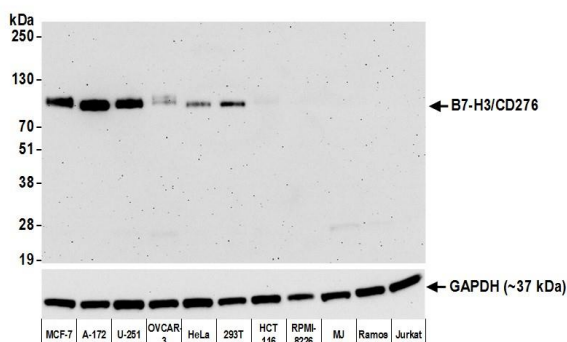
APPLICATIONS Centrifuge tube to remove product from lid. Optimal working dilutions should be determined experimentally by the investigator. Prepare working dilution immediately before use.

Western Blot	1:1000
Immunoprecipitation	3 µl/mg lysate
Immunohistochemistry	1:100 to 1:500. Epitope retrieval with citrate buffer pH6.0 is recommended for FFPE tissue sections.
Immunocytochemistry	1:100 to 1:500. Epitope retrieval with citrate buffer pH6.0 is recommended for FFPE cell sections.
Immunofluorescence (IHC)	1:100 to 1:500. Epitope retrieval with citrate buffer pH6.0 is recommended for FFPE tissue sections.
Flow Cytometry	Fixed in 4% formaldehyde and permeabilized with 90% methanol. 1 µl per 1 x 10 ⁶ cells.

IHC HUMAN CONTROLS Lung Carcinoma, Ovarian Carcinoma, A-172 Cells, HEK293T Cells, HeLa Cells, MCF-7 Cells

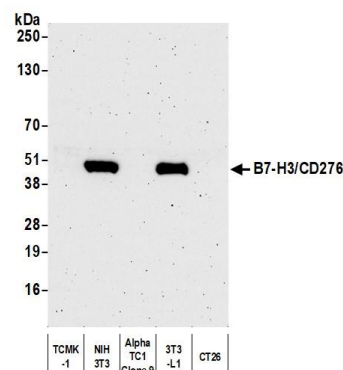
ADDITIONAL INFO <https://www.bethyl.com/product/A700-025>
Use the link above to view SDS, a current list of citations, and other product specific information.

This document certifies that this product has met all of the quality control standards defined by Bethyl Laboratories, Inc.
Eric McIntush, PhD | Chief Scientific Officer Date: September 16, 2020



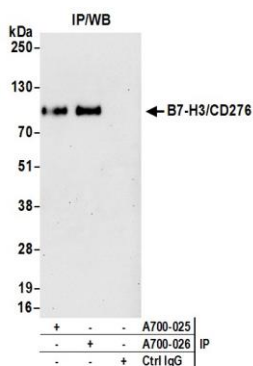
Detection of human B7-H3/CD276 by western blot.

Samples: Whole cell lysate (15 µg) from MCF-7, A-172, U-251MG, OVCAR-3, HeLa, HEK293T, HCT 116, RPMI-8226, MJ, Ramos, and Jurkat cells prepared using NETN lysis buffer. *Antibody:* Rabbit anti-B7-H3/CD276 recombinant monoclonal antibody [BLR025F] (A700-025 lot 1) used at 1:1000. *Secondary:* HRP-conjugated goat anti-rabbit IgG (A120-101P). Chemiluminescence with an exposure time of 3 minutes. Lower Panel: Rabbit anti-GAPDH (A300-639A).



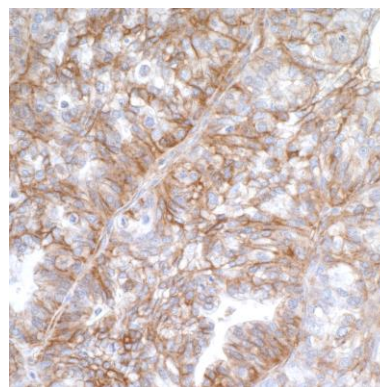
Detection of mouse B7-H3/CD276 by western blot.

Samples: Whole cell lysate (50 µg) from TCMK-1, NIH 3T3, AlphaTC1 Clone 9, 3T3-L1, and CT26 cells prepared using NETN lysis buffer. *Antibody:* Rabbit anti-B7-H3/CD276 recombinant monoclonal antibody [BLR025F] (A700-025 lot 1) used at 1:1000. *Secondary:* HRP-conjugated goat anti-rabbit IgG (A120-101P). Chemiluminescence with an exposure time of 3 minutes.



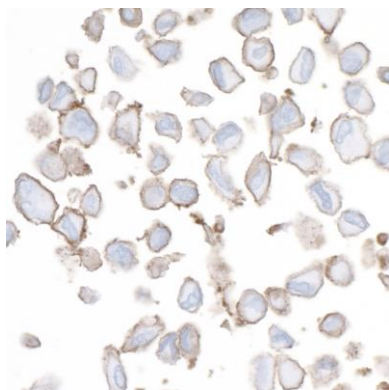
Detection of human B7-H3/CD276 by western blot of immunoprecipitates.

Samples: Whole cell lysate (1.0 mg per IP reaction; 20% of IP loaded) from HeLa cells prepared using NETN lysis buffer. *Antibodies:* Rabbit anti-B7-H3/CD276 recombinant monoclonal antibody [BLR025F] (A700-025 lot 1) used for IP at 3 µl per reaction. B7-H3/CD276 was also immunoprecipitated by rabbit anti-B7-H3/CD276 recombinant monoclonal antibody [BLR026F] (A700-026). For blotting immunoprecipitated B7-H3/CD276, A700-025 was used at 1:1000. Chemiluminescence with an exposure time of 30 seconds.

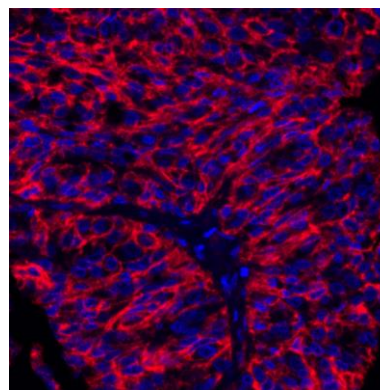


Detection of human B7-H3/CD276 by immunohistochemistry.

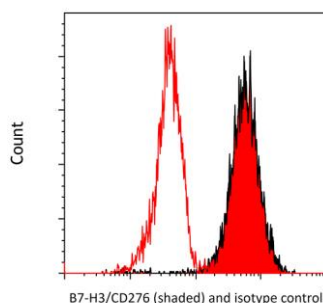
Sample: FFPE section of ovarian carcinoma. *Antibody:* Rabbit anti-B7-H3/CD276 recombinant monoclonal antibody [BLR025F] (A700-025 lot 1) used at 1:200. *Secondary:* HRP-conjugated goat anti-rabbit IgG (A120-501P). *Substrate:* DAB.



Detection of human B7-H3/CD276 by immunocytochemistry. *Sample:* FFPE section of A-172 cells. *Antibody:* Rabbit anti-B7-H3/CD276 recombinant monoclonal [BLR025F] (A700-025 lot 1) used at 1:200. *Secondary:* HRP-conjugated goat anti-rabbit IgG (A120-501P). *Substrate:* DAB.



Detection of human B7-H3/CD276 (red) by immunohistochemistry. *Sample:* FFPE section of human lung carcinoma. *Antibody:* Rabbit anti-B7-H3/CD276 recombinant monoclonal antibody [BLR025F] (A700-025 lot 1) used at 1:250. *Secondary:* HRP-conjugated goat anti-rabbit IgG (A120-501P). *Substrate:* Opal™. *Counterstain:* DAPI (blue).



Detection of human B7-H3/CD276 (shaded) in 293T cells by flow cytometry. *Antibody:* Rabbit anti-B7-H3/CD276 recombinant monoclonal [BLR025F] (A700-025 lot 1) or isotype control (unshaded). *Secondary:* DyLight® 650-conjugated goat anti-rabbit IgG (A120-201D5).