

Ki-67 Recombinant Monoclonal Antibody [BLR021E]

Rabbit Recombinant Monoclonal

Purified Protein ID NP_002408.3
Catalog No. A700-021-T GeneID 4288
Lot No. A700-021-T-2



APPLICATIONS IHC, ICC, IHC-IF, ICC-IF, F, mIF
SPECIES REACTIVITY Human
AMOUNT 10 µl (5+ tests)
CONCENTRATION 50 µg/ml
STORAGE/SHELF LIFE 2 - 8° C / 1 year from date of receipt
PHYSICAL STATE Liquid
BUFFER Borate Buffered Saline (BBS) pH 8.2 with 0.1% BSA and 0.09% Sodium Azide
ISOTYPE IgG
CLONE # BLR021E
ORIGIN USA
PRODUCTION PROCEDURES Recombinant antibody was purified from cell culture supernatant.

Immunogen was a peptide representing the repetitive 66 bp element of human Ki-67 using the numbering given in entry NP_002408.2 (GeneID 4288).

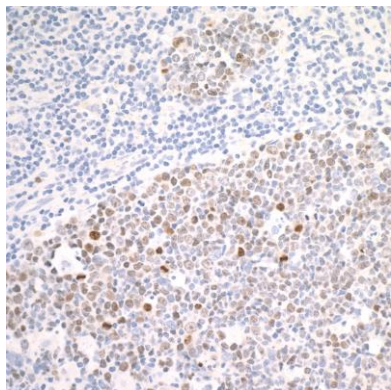
APPLICATIONS Centrifuge tube to remove product from lid. Optimal working dilutions should be determined experimentally by the investigator. Prepare working dilution immediately before use.

Immunohistochemistry 1:100 to 1:500. Epitope retrieval with citrate buffer pH 6.0 is recommended for FFPE tissue sections.
Immunocytochemistry 1:100 to 1:500. Epitope retrieval with citrate buffer pH 6.0 is recommended for FFPE cell sections.
Immunofluorescence (IHC) 1:100 to 1:500. Epitope retrieval with citrate buffer pH6.0 is recommended for FFPE tissue sections.
Immunofluorescence (ICC) 1:100 - 1:500
Flow Cytometry Fixed in 4% formaldehyde and permeabilized with 90% methanol. 1 µl per 1×10^6 cells.
Multiplex Immunofluorescence 1:250

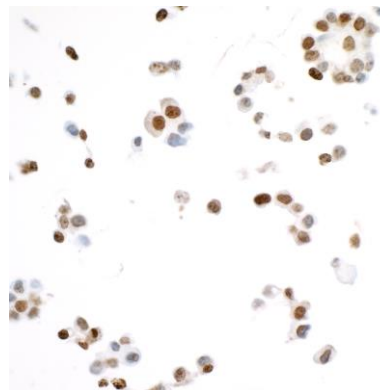
IHC HUMAN CONTROLS Lung Carcinoma TIL, Ovarian Carcinoma, Tonsil, HeLa Cells, HL-60 Cells, Jurkat Cells, MOLT-4 Cells, OVCAR-8 Cells

ADDITIONAL INFO <https://www.bethyl.com/product/A700-021-T>
Use the link above to view SDS, a current list of citations, and other product specific information.

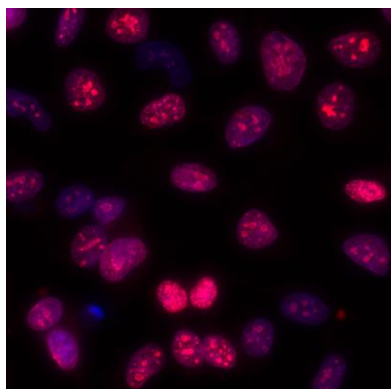
This document certifies that this product has met all of the quality control standards defined by Bethyl Laboratories, Inc.
Eric McIntush, PhD | Chief Scientific Officer Date: April 1, 2020



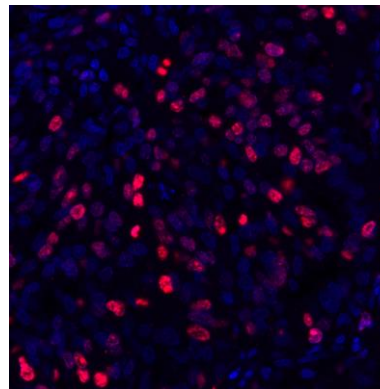
Detection of human Ki-67 in FFPE tonsil by IHC. *Antibody:* Rabbit anti-Ki-67 recombinant monoclonal antibody [BLR021E] (A700-021-T lot 2). *Secondary:* HRP-conjugated goat anti-rabbit IgG (A120-501P). *Substrate:* DAB.



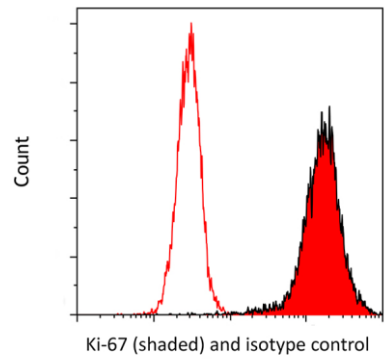
Detection of human Ki-67 in FFPE OVCAR-4 cells by ICC. *Antibody:* Rabbit anti-Ki-67 recombinant monoclonal antibody [BLR021E] (A700-021-T lot 2). *Secondary:* HRP-conjugated goat anti-rabbit IgG (A120-501P). *Substrate:* DAB.



Detection of human Ki-67 by immunocytochemistry. *Sample:* acetone/methanol fixed HeLa cells. *Antibody:* Rabbit anti-Ki-67 recombinant monoclonal antibody [BLR021E] (A700-021-T lot 1) used at 1:100. *Secondary:* DyLight® 594-conjugated goat anti-rabbit IgG (A120-101D4). *Counterstain:* DAPI.



Detection of human Ki-67 (red) by immunohistochemistry. *Sample:* FFPE section of human ovarian carcinoma. *Antibody:* Rabbit anti-Ki-67 recombinant monoclonal antibody [BLR021E] (A700-021-T lot 1) used at 1:500. *Secondary:* HRP-conjugated goat anti-rabbit IgG (A120-501P). *Substrate:* Opal™. *Counterstain:* DAPI (blue).



Detection of human Ki-67 (shaded) in MOLT4 cells by flow cytometry. *Antibody:* Rabbit anti-Ki-67 recombinant monoclonal [BLR021E] (A700-021-T lot 1) or isotype control (unshaded). *Secondary:* DyLight® 650-conjugated goat anti-rabbit IgG (A120-201D5).