

PBRM1 Recombinant Monoclonal Antibody [BL-39-2C3]

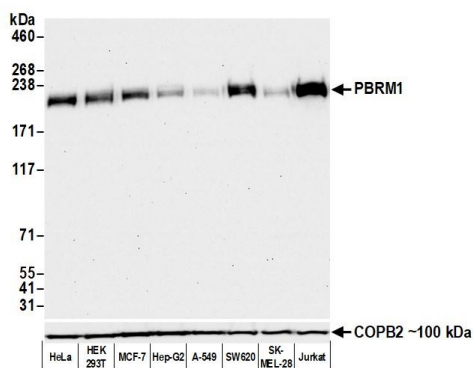
Rabbit Recombinant Monoclonal

Purified Protein ID AAP34197.1
Catalog No. A700-019 GeneID 55193
Lot No. A700-019-4

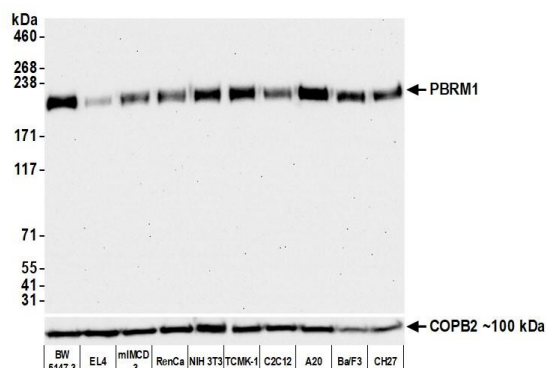


APPLICATIONS	WB, IP, IHC, ICC, IHC-IF, F
SPECIES REACTIVITY	Human, Mouse
AMOUNT	100 µl (10 blots)
CONCENTRATION	250 µg/ml
STORAGE/SHELF LIFE	2 – 8° C / 1 year from date of receipt
PHYSICAL STATE	Liquid
BUFFER	Borate Buffered Saline (BBS) pH 8.2 with 0.1% BSA and 0.09% Sodium Azide
ISOTYPE	IgG
CLONE #	BL-39-2C3
ORIGIN	USA
PRODUCTION PROCEDURES	Recombinant antibody was purified from cell culture supernatant. Immunogen was a recombinant protein representing residues 1–293 of human Polybromo 1 (NP_060783.3)
APPLICATIONS	Centrifuge tube to remove product from lid. Optimal working dilutions should be determined experimentally by the investigator. Prepare working dilution immediately before use. Western Blot 1:1000 Immunoprecipitation 5 µl/mg lysate Immunohistochemistry 1:100 – 1:500. Epitope retrieval with citrate buffer pH 6.0 is recommended for FFPE tissue sections. Immunocytochemistry 1:100 – 1:500. Epitope retrieval with citrate buffer pH6.0 is recommended for FFPE cell sections. Immunofluorescence (IHC) 1:100 – 1:500. Epitope retrieval with citrate buffer pH 6.0 is recommended for FFPE tissue sections. Flow Cytometry 1 µl per 1 × 10 ⁶ cells
IHC HUMAN CONTROLS	Mammary Gland, Ovarian Carcinoma, Skin Carcinoma, HeLa Cells, Jurkat Cells, MCF-7 Cells, RT-4 Cells
IHC MOUSE CONTROLS	RenCa Cells
ADDITIONAL INFO	https://www.bethyl.com/product/A700-019 Use the link above to view SDS, a current list of citations, and other product specific information.

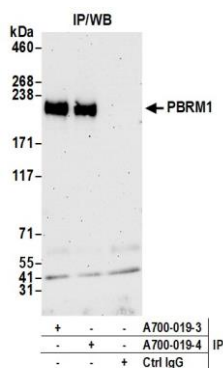
This document certifies that this product has met all of the quality control standards defined by Bethyl Laboratories, Inc.
Brian McWilliams, PhD Date: March 2, 2021



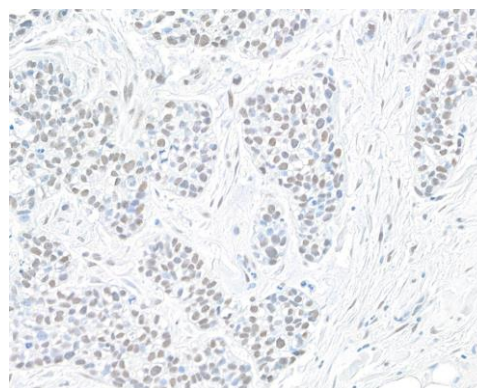
Detection of human PBRM1 by western blot. *Samples:* Whole cell lysate (50 µg) from HeLa, HEK293T, MCF-7, Hep-G2, A-549, SW620, SK-MEL-28, and Jurkat cells prepared using NETN lysis buffer. *Antibody:* Rabbit anti-PBRM1 recombinant monoclonal antibody [BL-39-2C3] (A700-019 lot 4) used at 1:1000. *Secondary:* HRP-conjugated goat anti-rabbit IgG (A120-101P). Chemiluminescence with an exposure time of 30 seconds. Lower Panel: Rabbit anti-COPB2 antibody (A304-523A).



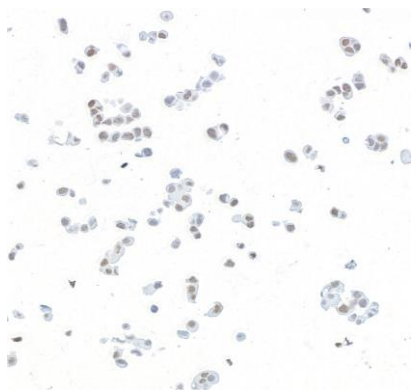
Detection of mouse PBRM1 by western blot. *Samples:* Whole cell lysate (50 µg) from BW5147.3, EL4, mIMCD-3, RenCa, NIH 3T3, TCMK-1, C2C12, A20, Ba/F3, and CH27 cells prepared using NETN lysis buffer. *Antibody:* Rabbit anti-PBRM1 recombinant monoclonal antibody [BL-39-2C3] (A700-019 lot 4) used at 1:1000. *Secondary:* HRP-conjugated goat anti-rabbit IgG (A120-101P). Chemiluminescence with an exposure time of 30 seconds. Lower Panel: Rabbit anti-COPB2 antibody (A304-523A).



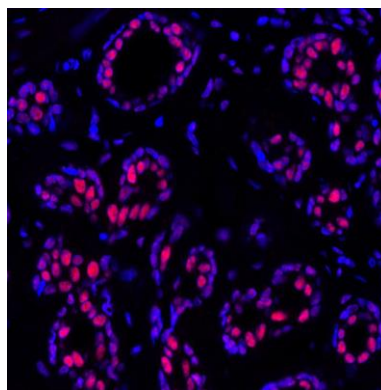
Detection of human PBRM1 by western blot of immunoprecipitates. *Samples:* Whole cell lysate (1.0 mg per IP reaction; 20% of IP loaded) from 293T cells prepared using NETN lysis buffer. *Antibodies:* Rabbit anti-PBRM1 recombinant monoclonal antibody [BL-39-2C3] (A700-019 lot 4) used for IP at 5 µl/mg lysate. PBRM1 was also immunoprecipitated by a previous lot of this antibody (lot A700-019-3). For blotting immunoprecipitated PBRM1, A700-019 was used at 1:1000. Chemiluminescence with an exposure time of 10 seconds.



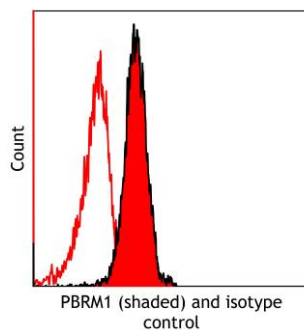
Detection of human PBRM1 in FFPE breast carcinoma by immunohistochemistry. *Antibody:* Rabbit anti-PBRM1 recombinant monoclonal antibody [BL-39-2C3] (A700-019 lot 4). *Secondary:* HRP-conjugated goat anti-rabbit IgG (A120-501P). *Substrate:* DAB.



Detection of human PBRM1 in FFPE MCF7 cells by immunocytochemistry. *Antibody:* Rabbit anti-PBRM1 recombinant monoclonal antibody [BL-39-2C3] (A700-019 lot 4). *Secondary:* HRP-conjugated goat anti-rabbit IgG (A120-501P). *Substrate:* DAB.



Detection of human PBRM1 in FFPE breast by immunohistochemistry-IF. *Antibody:* Rabbit anti-PBRM1 recombinant monoclonal antibody [BL-39-2C3] (A700-019 Lot 2). *Secondary:* HRP-conjugated goat anti-rabbit IgG (A120-501P). *Substrate:* Opal™. Counterstain: DAPI.



Detection of Human PBRM1 in Jurkat cells by flow cytometry. *Antibody:* Rabbit anti-PBRM1 recombinant monoclonal antibody [BL-39-2C3] (A700-019 Lot 2) (red shaded) or isotype control (unshaded). *Secondary:* DyLight® 488-conjugated goat anti-rabbit IgG (A120-101D2).