

Phospho KAP-1 (S824) Recombinant Monoclonal Antibody [BL-246-7B5]

Rabbit Recombinant Monoclonal

Purified Protein ID NP_005753.1
Catalog No. A700-013 GeneID 10155
Lot No. A700-013-3



APPLICATIONS WB, IP, IHC, ICC-IF
SPECIES REACTIVITY Human
AMOUNT 100 µl (10 blots)
CONCENTRATION 100 µg/ml
STORAGE/SHELF LIFE 2 – 8° C / 1 year from date of receipt
PHYSICAL STATE Liquid
BUFFER Borate Buffered Saline (BBS) pH 8.2 with 0.1% BSA and 0.09% Sodium Azide
ISOTYPE IgG
CLONE # BL-246-7B5
ORIGIN USA
PRODUCTION PROCEDURES Recombinant antibody was purified from cell culture supernatant.

Immunogen was a synthetic phosphorylated peptide, which represented a portion of human KRAB-Associated Protein 1 surrounding Serine 824 according to the numbering given in entry NP_005753.1 (GeneID 10155).

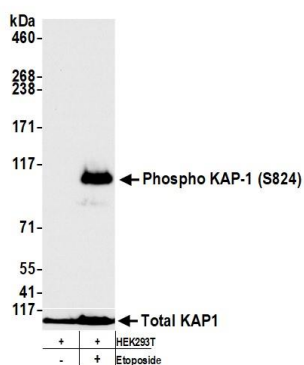
APPLICATIONS Centrifuge tube to remove product from lid. Optimal working dilutions should be determined experimentally by the investigator. Prepare working dilution immediately before use.

Western Blot 1:1000
Immunoprecipitation 20 µl/mg lysate
Immunohistochemistry 1:100 – 1:500. Epitope retrieval with citrate buffer pH 6.0 is recommended for FFPE tissue sections.
Immunofluorescence (ICC) 1:100 – 1:500. Formaldehyde fixation is recommended. Permeabilization with Triton-X 100 is recommended for formaldehyde-fixed cells.

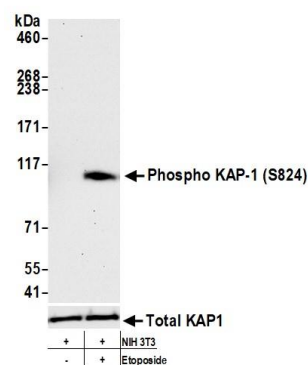
IHC HUMAN CONTROLS Breast Carcinoma, Lung Carcinoma, Ovarian Carcinoma, Seminoma, Skin Carcinoma, HeLa Cells

ADDITIONAL INFO <https://www.bethyl.com/product/A700-013>
Use the link above to view SDS, a current list of citations, and other product specific information.

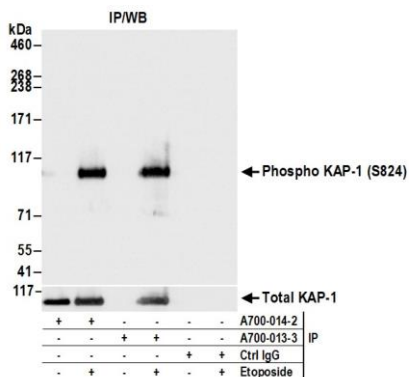
This document certifies that this product has met all of the quality control standards defined by Bethyl Laboratories, Inc.
Brian McWilliams, PhD Date: July 28, 2021



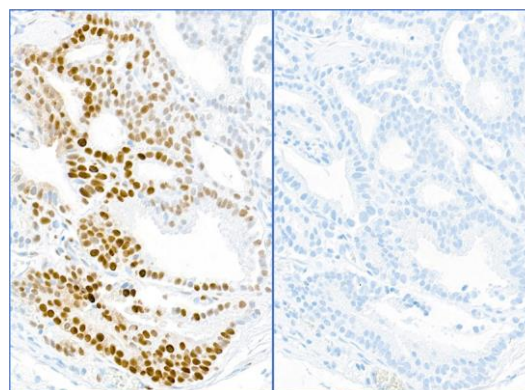
Detection of human Phospho KAP-1 (S824) by western blot. *Samples:* Whole cell lysate (50 µg) from HEK293T cells treated with 100 µM etoposide (+) or mock treated (-) prepared using NETN lysis buffer. *Antibodies:* Rabbit anti-Phospho KAP-1 (S824) recombinant monoclonal antibody [BL-246-7B5] (A700-013 lot 3) used at 1:1000. Lower panel shows western blot for total KAP-1 using rabbit anti-KAP-1 recombinant monoclonal antibody [BL-248-2G6] (A700-014) at 1:1000. *Secondary:* HRP-conjugated goat anti-rabbit IgG (A120-101P). Chemiluminescence with an exposure time of 3 seconds.



Detection of mouse Phospho KAP-1 (S824) by western blot. *Samples:* Whole cell lysate (50 µg) from NIH 3T3 cells treated with 100 µM etoposide (+) or mock treated (-) prepared using NETN lysis buffer. *Antibodies:* Rabbit anti-Phospho KAP-1 (S824) recombinant monoclonal antibody [BL-246-7B5] (A700-013 lot 3) used at 1:1000. Lower panel shows western blot for total KAP-1 using rabbit anti-KAP-1 recombinant monoclonal antibody [BL-248-2G6] (A700-014) at 1:1000. *Secondary:* HRP-conjugated goat anti-rabbit IgG (A120-101P). Chemiluminescence with an exposure time of 30 seconds.

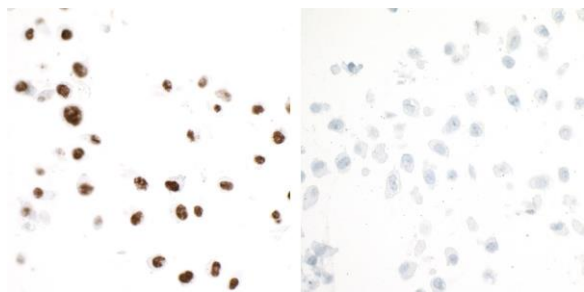


Detection of human Phospho KAP-1 (S824) by western blot of immunoprecipitates. *Samples:* Whole cell lysate (1 mg for IP; 20% of IP loaded) from HEK293T cells prepared using NETN lysis buffer that were treated with 100 µM etoposide (+) or mock treated (-). *Antibodies:* Rabbit anti-Phospho KAP-1 (S824) recombinant monoclonal antibody [BL-246-7B5] (A700-013 lot 3) used for IP at 20 µl/mg lysate. Phospho-KAP-1-S824 was also immunoprecipitated by a previous lot of this antibody (A700-013 lot 2) and rabbit anti-KAP-1 recombinant monoclonal antibody [BL-248-2G6] (A700-014). For blotting immunoprecipitated Phospho-KAP-1-S824, A700-013 and A700-014 were used at 1:1000. Chemiluminescence with an exposure time of 250 milliseconds.

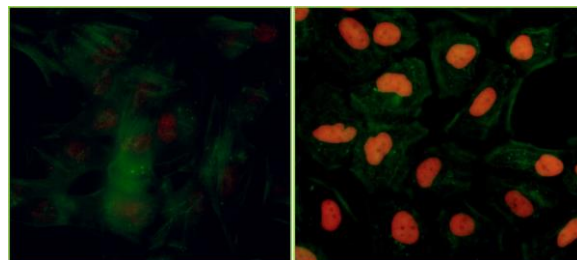


Detection of human Phospho KAP-1 (S824) in FFPE skin carcinoma by IHC. Mock phosphatase treated sections (left) and calf intestinal phosphatase-treated sections (right). *Antibody:* Rabbit anti-Phospho KAP-1 (S824) recombinant monoclonal antibody [BL-246-7B5] (A700-013 lot 3). *Secondary:* HRP-conjugated goat anti-rabbit IgG (A120-501P). *Substrate:* DAB.

Phospho KAP-1 (S824) Recombinant Monoclonal Antibody [BL-246-7B5] A700-013



Detection of human Phospho KAP-1 (S824) in FFPE etoposide treated HeLa cells by ICC. Mock phosphatase treated section (left) and calf intestinal phosphatase-treated section (right). *Antibody:* Rabbit anti-Phospho KAP-1 (S824) recombinant monoclonal antibody [BL-246-7B5] (A700-013 lot 3). *Secondary:* HRP-conjugated goat anti-rabbit IgG (A120-501P). *Substrate:* DAB.



Detection of human Phospho KAP-1 (S824) by immunocytochemistry. *Samples:* Formaldehyde-fixed asynchronous HeLa cells grown in chambered microscope slides and treated with etoposide (right) or untreated (left). *Antibody:* Rabbit anti-Phospho KAP-1 (S824) recombinant monoclonal antibody [BL-246-7B5] (A700-013-T lot 1) used at of 1:100. *Secondary:* DyLight® 594-conjugated goat anti-rabbit IgG (A120-201D4). *Counterstain:* Phalloidin conjugated Alexa Fluor® 488 (green).