

CD45 Recombinant Monoclonal Antibody [BL-178-12C7]

Rabbit Recombinant Monoclonal

Purified Protein ID NP_002829.3
Catalog No. A700-012 GeneID 5788
Lot No. A700-012-2



APPLICATIONS WB, IP, IHC, ICC, IHC-IF, F
SPECIES REACTIVITY Human
AMOUNT 100 µl (50+ tests)
CONCENTRATION 50 µg/ml
STORAGE/SHELF LIFE 2 – 8° C / 1 year from date of receipt
PHYSICAL STATE Liquid
BUFFER Borate Buffered Saline (BBS) pH 8.2 with 0.1% BSA and 0.09% Sodium Azide
ISOTYPE IgG
CLONE # BL-178-12C7
ORIGIN USA
PRODUCTION PROCEDURES Recombinant antibody was purified from cell culture supernatant.

Immunogen was a synthetic peptide representing a region between residue 1250 to 1306 (C-terminus) of human CD45 Molecule according to the numbering given in entry NP_002829.3 (GeneID 5788).

APPLICATIONS Centrifuge tube to remove product from lid. Optimal working dilutions should be determined experimentally by the investigator. Prepare working dilution immediately before use.

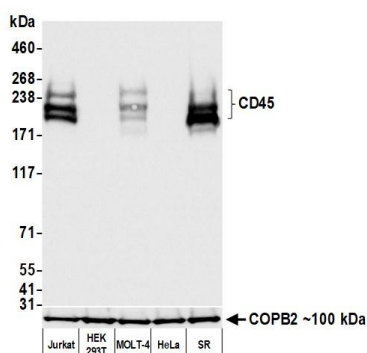
| | |
|--------------------------|--|
| Western Blot | 1:1000 |
| Immunoprecipitation | 20 µl/mg lysate |
| Immunohistochemistry | 1:100 – 1:500. Epitope retrieval with citrate buffer pH 6.0 is recommended for FFPE tissue sections. |
| Immunocytochemistry | 1:100 – 1:500. Epitope retrieval with citrate buffer pH6.0 is recommended for FFPE cell sections. |
| Immunofluorescence (IHC) | 1:100 to 1:500. Epitope retrieval with citrate buffer pH6.0 is recommended for FFPE cell sections. |
| Flow Cytometry | 1 µl per 1 X 10 ⁶ cells |

IHC HUMAN CONTROLS Appendix, Breast Carcinoma, Colon Carcinoma, Intestine, Tonsil, Daudi Cells, Jurkat Cells, Ramos Cells

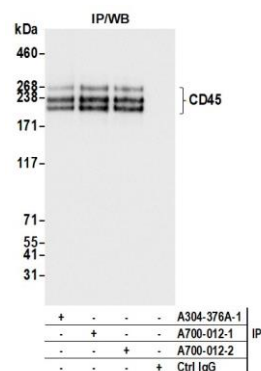
ADDITIONAL INFO <https://www.bethyl.com/product/A700-012>

Use the link above to view SDS, a current list of citations, and other product specific information.

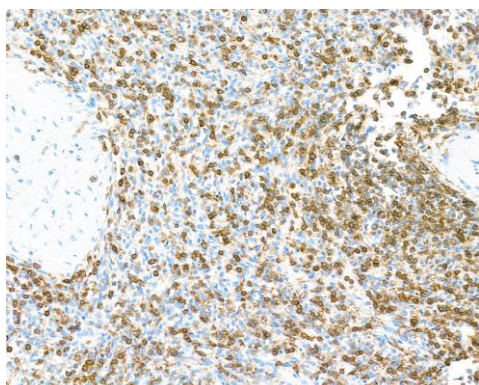
This document certifies that this product has met all of the quality control standards defined by Bethyl Laboratories, Inc.
Brian McWilliams, PhD Date: May 17, 2021



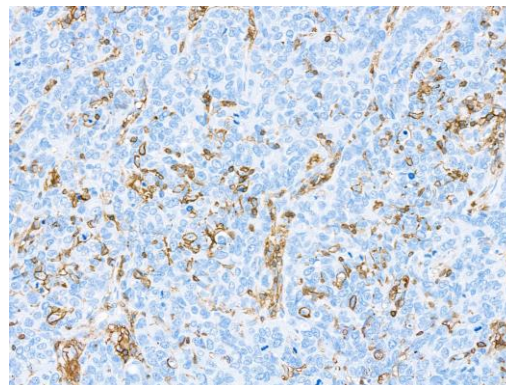
Detection of human CD45 by western blot. *Samples:* Whole cell lysate (50 μ g) from Jurkat, HEK293T, MOLT-4, HeLa, and SR cells prepared using NETN lysis buffer. *Antibody:* Rabbit anti-CD45 recombinant monoclonal antibody [BL-178-12C7] (A700-012 lot 2) used at 1:1000. *Secondary:* HRP-conjugated goat anti-rabbit IgG (A120-101P). Chemiluminescence with an exposure time of 1 second. Lower Panel: Rabbit anti-COPB2 antibody (A304-523A).



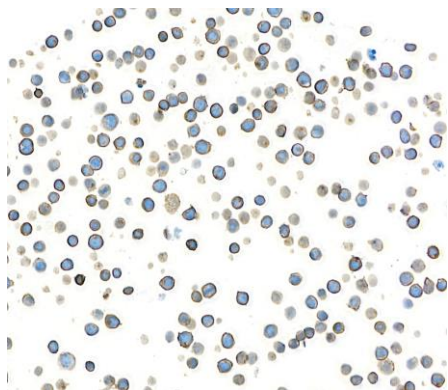
Detection of human CD45 by western blot of immunoprecipitates. *Samples:* Whole cell lysate (1.0 mg per IP reaction; 20% of IP loaded) from Jurkat cells prepared using NETN lysis buffer. *Antibodies:* Rabbit anti-CD45 recombinant monoclonal antibody [BL-178-12C7] (A700-012 lot 2) used for IP at 20 μ l/mg lysate. CD45 was also immunoprecipitated by a previous lot of this antibody (A700-012 lot 1) and rabbit anti-CD45 antibody (A304-376A). For blotting immunoprecipitated CD45, A700-012 was used at 1:1000. Chemiluminescence with an exposure time of 250 milliseconds.



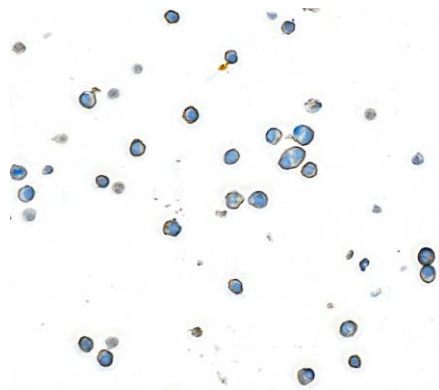
Detection of human CD45 in appendix by immunohistochemistry. *Antibody:* Rabbit anti-CD45 recombinant monoclonal antibody [BL-178-12C7] (A700-012 lot 2). *Secondary:* HRP-conjugated goat anti-rabbit IgG (A120-501P). *Substrate:* DAB.



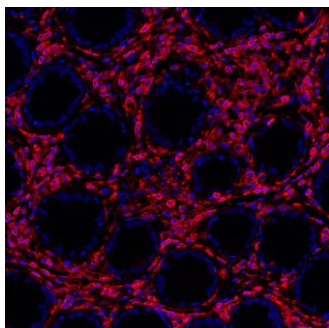
Detection of human CD45 in breast carcinoma by immunohistochemistry. *Antibody:* Rabbit anti-CD45 recombinant monoclonal antibody [BL-178-12C7] (A700-012 lot 2). *Secondary:* HRP-conjugated goat anti-rabbit IgG (A120-501P). *Substrate:* DAB.



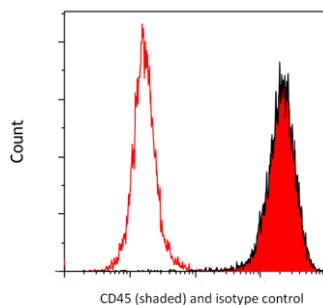
Detection of human CD45 in Jurkat cells by immunocytochemistry. *Antibody:* Rabbit anti-CD45 recombinant monoclonal antibody [BL-178-12C7] (A700-012 lot 2). *Secondary:* HRP-conjugated goat anti-rabbit IgG (A120-501P). *Substrate:* DAB.



Detection of human CD45 in Daudi cells by immunocytochemistry. *Antibody:* Rabbit anti-CD45 recombinant monoclonal antibody [BL-178-12C7] (A700-012). *Secondary:* HRP-conjugated goat anti-rabbit IgG (A120-501P). *Substrate:* DAB.



Detection of human CD45 (red) by immunohistochemistry. *Sample:* FFPE section of human colon carcinoma. *Antibody:* Rabbit anti-CD45 recombinant monoclonal antibody [BL-178-12C7] (A700-012 lot 1) used at 1:250. *Secondary:* HRP-conjugated goat anti-rabbit IgG (A120-501P). *Substrate:* Opal™. *Counterstain:* DAPI (blue).



Detection of human CD45 by flow cytometry. *Sample:* Jurkat cells were fixed in 4% formaldehyde and permeabilized with 90% methanol. *Antibody:* 1E6 cells were incubated with 1 ul of rabbit anti-CD45 recombinant monoclonal antibody [BL-178-12C7] (A700-012 lot 1) (red shaded) or isotype control (unshaded). *Secondary:* DyLight® 650-conjugated goat anti-rabbit IgG (A120-201D5).

