

Phospho RPA32 (S4/S8) Recombinant Monoclonal Antibody [BL-165-5F1]

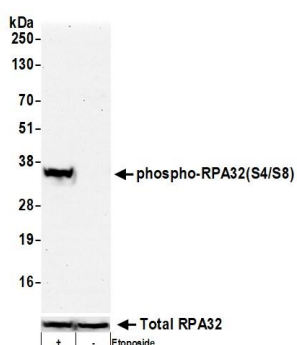
Rabbit Recombinant Monoclonal

Purified		Protein ID	NP_002937.1
Catalog No.	A700-009	GeneID	6118
Lot No.	A700-009-2		

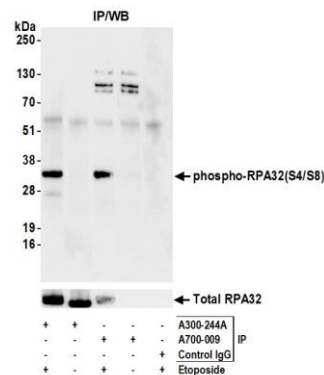


APPLICATIONS	WB, IP, ICC, ICC-IF
SPECIES REACTIVITY	Human
AMOUNT	100 µl (10 blots)
CONCENTRATION	1000 µg/ml
STORAGE/SHELF LIFE	2 – 8° C / 1 year from date of receipt
PHYSICAL STATE	Liquid
BUFFER	Borate Buffered Saline (BBS) pH 8.2 with 0.09% Sodium Azide, BSA Free
ISOTYPE	IgG
CLONE #	BL-165-5F1
ORIGIN	USA
PRODUCTION PROCEDURES	Recombinant antibody was purified from cell culture supernatant. Immunogen was a dually phosphorylated synthetic peptide, which represented a portion of human replication protein A2, 32 kDa surrounding phosphorylated serines that corresponded to positions 4 and 8 using the numbering given in entry NP_002937.1 (GeneID 6118).
APPLICATIONS	Centrifuge tube to remove product from lid. Optimal working dilutions should be determined experimentally by the investigator. Prepare working dilution immediately before use. Western Blot 1:1000 Immunoprecipitation 6 µl/1.0 mg lysate Immunocytochemistry 1:1000 to 1:5000. Epitope retrieval with citrate buffer pH6.0 is recommended for FFPE cell sections. Immunofluorescence (ICC) 1:5000.
ADDITIONAL INFO	https://www.bethyl.com/product/A700-009 Use the link above to view SDS, a current list of citations, and other product specific information.

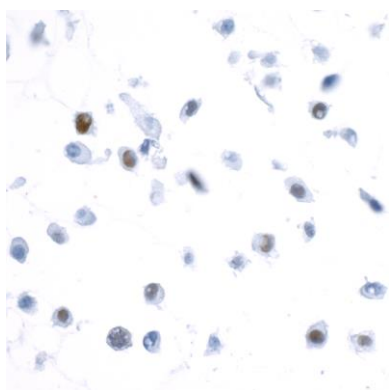
This document certifies that this product has met all of the quality control standards defined by Bethyl Laboratories, Inc.
Eric McIntush, PhD | Chief Scientific Officer Date: July 21, 2020



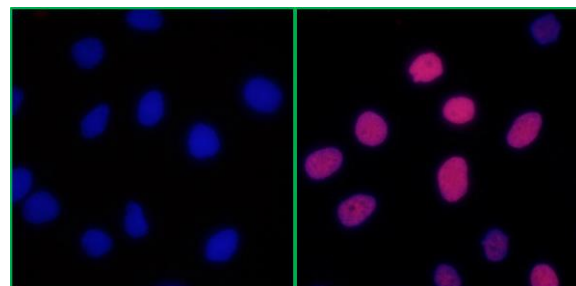
Detection of human phospho-RPA32(S4/S8) by western blot. *Samples:* Whole cell lysate (50 µg) from HeLa cells treated with 100 µM etoposide or mock treated (-). *Antibody:* Rabbit anti-phospho-RPA32(S4/S8) recombinant monoclonal antibody [BL-165-5F1] (A700-009 lot 2) used at 1:1000. *Secondary:* HRP-conjugated goat anti-rabbit IgG (A120-101P). Chemiluminescence with an exposure time of 30 seconds. Lower Panel: Total RPA32 detected by rabbit anti-RPA32 (A300-244A).



Detection of human phospho-RPA32(S4/S8) by western blot of immunoprecipitates. *Samples:* Whole cell lysate (1.0 mg per IP reaction; 20% of IP loaded) from HeLa cells treated with 100 µM etoposide (+) or mock treated (-). *Antibodies:* Rabbit anti-phospho-RPA32(S4/S8) recombinant monoclonal antibody [BL-165-5F1] (A700-009 lot 2) used for IP at 6 µl per reaction. Phospho-RPA32(S4/S8) was also immunoprecipitated by rabbit anti-RPA32 antibody A300-244A. For blotting immunoprecipitated phospho-RPA32(S4/S8), A700-009 was used at 1:1000. Chemiluminescence with an exposure time of 3 seconds. Lower Panel: Total RPA32 detected by rabbit anti-RPA32 (A300-244A).



Detection of human Phospho RPA32 (S4/S8) in FFPE HeLa cells treated with etoposide by immunocytochemistry. *Antibody:* Rabbit anti-Phospho RPA32 (S4/S8) recombinant monoclonal antibody [BL-165-5F1] (A700-009 Lot 2). *Secondary:* HRP-conjugated goat anti-rabbit IgG (A120-501P). *Substrate:* DAB.



Detection of Human Phospho RPA32 (S4/S8) by Immunocytochemistry. *Samples:* NBF-fixed HeLa cells treated with etoposide (right) or mock treated (left). *Antibody:* Rabbit anti-Phospho RPA32 (S4/S8) recombinant monoclonal antibody [BL-165-5F1] (A700-009 lot 1) used at 1:5,000. *Detection:* DyLight® 594-conjugated goat anti-rabbit IgG (A120-101D4). *Counterstain:* DAPI (blue).