

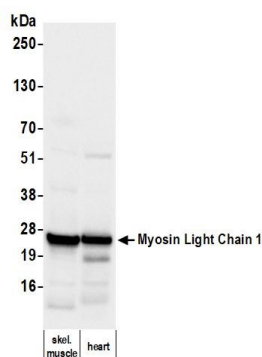
Myosin Light Chain 1 Monoclonal Antibody [39–15]

Mouse Monoclonal

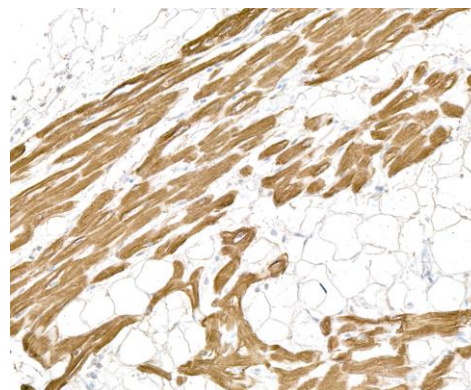
Purified		RefSeq ID	NP_524144.1
Catalog No.	A500–052A	Uniprot ID	P05976
Lot No.	1	GenelD	4632

APPLICATIONS	WB, IHC
SPECIES REACTIVITY	Human, Mouse
AMOUNT	100 µl (50+ tests)
CONCENTRATION	100 µg/ml
STORAGE/SHELF LIFE	2 – 8°C / 1 year from date of receipt
PHYSICAL STATE	Liquid
BUFFER	Phosphate Buffered Saline (PBS) with 0.1% BSA and 0.09% Sodium Azide
ISOTYPE	IgG1
CLONE #	39–15
ORIGIN	USA
PRODUCTION PROCEDURES	Monoclonal antibody was purified from cell culture supernatant. Immunogen was human Myosin Light Chain 1
APPLICATIONS	Centrifuge tube to remove product from lid. Optimal working dilutions should be determined experimentally by the investigator. Prepare working dilution immediately before use. Western Blot 1:1,000 Immunohistochemistry 1:100 to 1:500. Epitope retrieval with citrate buffer pH 6.0 is recommended for FFPE tissue sections.
APPLICATION NOTES	All western blot analysis is performed using 5% Milk–TBST for blocking and as antibody diluent. Primary antibody is incubated overnight. Western blots are performed using Goat anti–Mouse IgG Heavy and Light Chain Antibody (A90–116P).
IHC HUMAN CONTROLS	Cardiac Muscle, Skeletal Muscle
ADDITIONAL INFO	https://www.fortislifesciences.com/p/A500–052A Use the link above to view SDS, a current list of citations, and other product specific information.

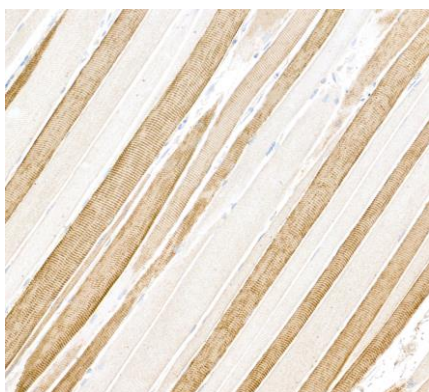
This document certifies that this product has met all of the quality control standards defined by Bethyl Laboratories, Inc.
Michael Spencer, PhD Date: May 29, 2024



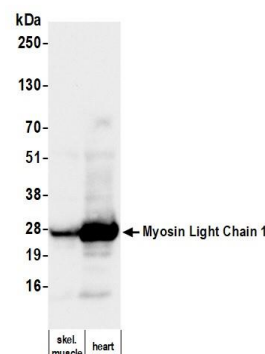
Detection of human Myosin Light Chain 1 by western blot. *Samples:* Tissue lysate (50 µg) from human skeletal muscle and heart. *Antibody:* Mouse anti-Myosin Light Chain 1 monoclonal antibody [39-15] (A500-052A lot 1) used at 1:1000. *Secondary:* HRP-conjugated goat anti-mouse IgG (A90-116P). *Detection:* Chemiluminescence with an exposure time of 3 seconds.



Detection of human Myosin Light Chain 1 by immunohistochemistry. *Sample:* FFPE section of human cardiac muscle. *Antibody:* Mouse anti-Myosin Light Chain 1 monoclonal antibody [39-15] (A500-052A lot 1). *Secondary:* HRP-conjugated goat anti-mouse IgG (A90-116P).



Detection of human Myosin Light Chain 1 by immunohistochemistry. *Sample:* FFPE section of human skeletal muscle. *Antibody:* Mouse anti-Myosin Light Chain 1 monoclonal antibody [39-15] (A500-052A lot 1). *Secondary:* HRP-conjugated goat anti-mouse IgG (A90-116P).



Detection of mouse Myosin Light Chain 1 by western blot. *Samples:* Tissue lysate (50 µg) from mouse skeletal muscle and heart. *Antibody:* Mouse anti-Myosin Light Chain 1 monoclonal antibody [39-15] (A500-052A lot 1) used at 1:1000. *Secondary:* HRP-conjugated goat anti-mouse IgG (A90-116P). *Detection:* Chemiluminescence with an exposure time of 3 seconds.