

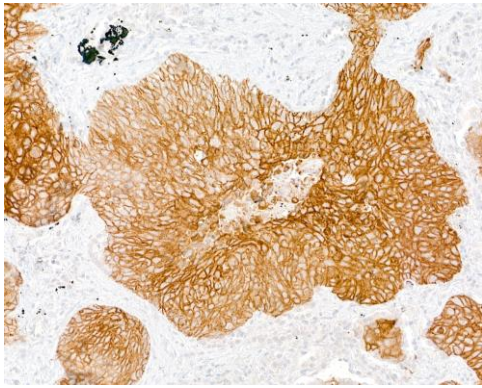
Desmoglein 3 Monoclonal Antibody [BC11]

Mouse Monoclonal

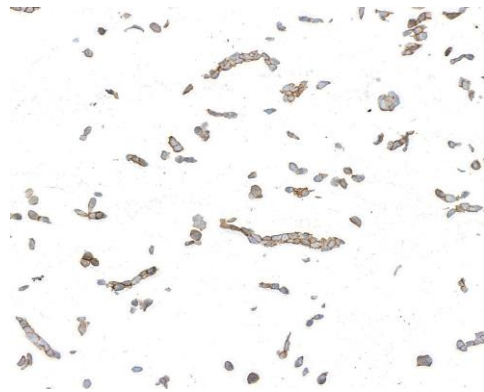
Purified		RefSeq ID	NP_001935.2
Catalog No.	A500-041A	Uniprot ID	P32926
Lot No.	1	GenID	1830

APPLICATIONS	IHC, ICC
SPECIES REACTIVITY	Human
AMOUNT	100 µl (50+ tests)
CONCENTRATION	1000 µg/ml
STORAGE/SHELF LIFE	2 – 8°C / 1 year from date of receipt
PHYSICAL STATE	Liquid
BUFFER	Phosphate Buffered Saline (PBS) with 0.09% Sodium Azide, BSA-Free
ISOTYPE	IgG1
CLONE #	BC11
ORIGIN	USA
PRODUCTION PROCEDURES	Monoclonal antibody was purified from cell culture supernatant. Immunogen was human Desmoglein 3.
APPLICATIONS	Centrifuge tube to remove product from lid. Optimal working dilutions should be determined experimentally by the investigator. Prepare working dilution immediately before use. Immunohistochemistry 1:100 to 1:500. Epitope retrieval, using pressure cooker with citrate buffer pH 6.0 is recommended for FFPE tissue sections. Immunocytochemistry 1:100 to 1:500. Epitope retrieval, using pressure cooker with citrate buffer pH 6.0 is recommended for FFPE cell sections.
IHC HUMAN CONTROLS	Head and Neck Squamous Cell Carcinoma, Liver Squamous Cell Carcinoma, Lung Squamous Cell Carcinoma, Cal-27 Cells, FaDu Cells, HaCaT Cells
ADDITIONAL INFO	https://www.fortislife.com/p/A500-041A Use the link above to view SDS, a current list of citations, and other product specific information.

This document certifies that this product has met all of the quality control standards defined by Bethyl Laboratories, Inc.
Michael Spencer, PhD Date: September 27, 2023



Detection of human Desmoglein 3 by immunohistochemistry. *Sample:* FFPE section of lung squamous cell carcinoma. *Antibody:* Mouse anti-Desmoglein 3 monoclonal antibody [BC11] (A500-041A-1). *Detection:* Biocare Medical MACH 4 mouse probe/HRP Polymer.



Detection of human Desmoglein 3 by immunocytochemistry. *Sample:* FFPE section of FaDu cells. *Antibody:* Mouse anti-Desmoglein 3 monoclonal antibody [BC11] (A500-041A-1). *Detection:* Biocare Medical MACH 4 mouse probe/HRP Polymer.