

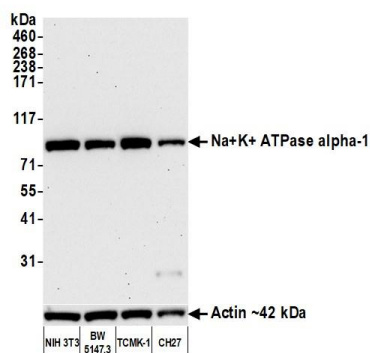
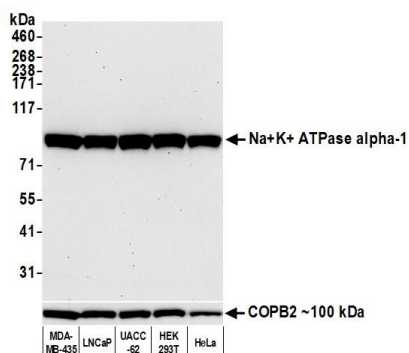
Sodium Potassium ATPase alpha-1 Monoclonal Antibody [464.6]

Mouse Monoclonal

Purified Protein ID NP_000692.2
Catalog No. A500-031A GeneID 476
Lot No. A500-031A-1

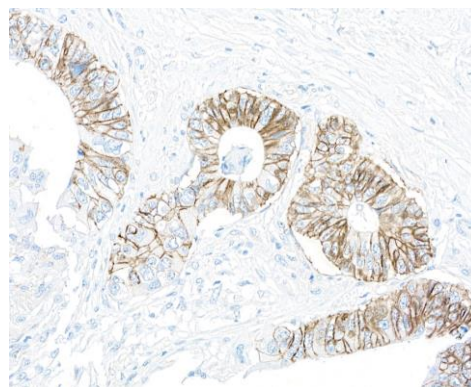
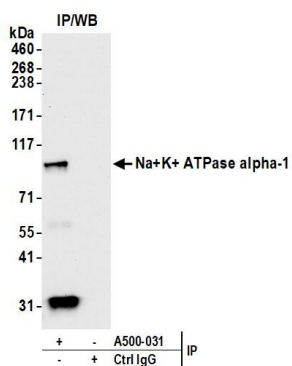
APPLICATIONS	WB, IP, IHC, ICC
SPECIES REACTIVITY	Human, Mouse
AMOUNT	100 µl (50+ tests)
CONCENTRATION	1000 µg/ml
STORAGE/SHELF LIFE	2 - 8°C / 1 year from date of receipt
PHYSICAL STATE	Liquid
BUFFER	Phosphate Buffered Saline (PBS) containing 0.09% Sodium Azide
ISOTYPE	IgG1
CLONE #	464.6
ORIGIN	USA
PRODUCTION PROCEDURES	Monoclonal antibody was purified from cell culture supernatant. Immunogen was full length native protein, purified.
APPLICATIONS	Centrifuge tube to remove product from lid. Optimal working dilutions should be determined experimentally by the investigator. Prepare working dilution immediately before use. Western Blot 1:1,000 Immunoprecipitation 6 µl/1 mg lysate Immunohistochemistry 1:100 to 1:500. Epitope retrieval with citrate buffer pH6.0 is recommended for FFPE tissue sections. Immunocytochemistry 1:100 to 1:500. Epitope retrieval with citrate buffer pH6.0 is recommended for FFPE cell sections.
IHC HUMAN CONTROLS	Bladder Cell Carcinoma, Breast Carcinoma, Colon Carcinoma, Lung Carcinoma, LNCap cells, MDA-MB-435 Cells, UACC-62 Cells
IHC MOUSE CONTROLS	Gut, Renca Cells
ADDITIONAL INFO	https://www.bethyl.com/product/A500-031A Use the link above to view SDS, a current list of citations, and other product specific information.

This document certifies that this product has met all of the quality control standards defined by Bethyl Laboratories, Inc.
Michael Spencer, PhD Date: November 3, 2021



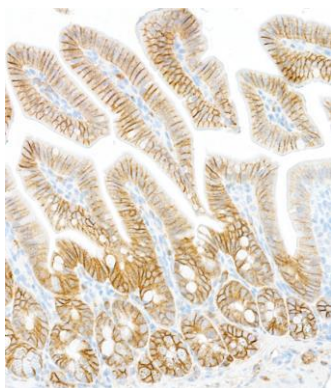
Detection of human Sodium Potassium ATPase alpha-1 by western blot. *Samples:* Whole cell lysate (10 µg) from MDA-MB-435, LNCaP, UACC-62, HEK293T, and HeLa cells prepared using NETN lysis buffer. *Antibody:* Mouse anti-Sodium Potassium ATPase alpha-1 monoclonal antibody [BL-464.6] (A500-031 lot 1) used at 1:1000. *Secondary:* HRP-conjugated goat anti-mouse IgG (A90-116P). Chemiluminescence with an exposure time of 30 seconds. Lower Panel: Rabbit anti-COPB2 antibody (A304-523A).

Detection of mouse Sodium Potassium ATPase alpha-1 by western blot. *Samples:* Whole cell lysate (10 µg) from NIH 3T3, BW5147.3, TCMK-1, and CH27 cells prepared using NETN lysis buffer. *Antibody:* Mouse anti-Sodium Potassium ATPase alpha-1-Recombinant monoclonal antibody [BL-464.6] (A500-031 lot 1) used at 1:1000. *Secondary:* HRP-conjugated goat anti-mouse IgG (A90-116P). Chemiluminescence with an exposure time of 30 seconds. Lower Panel: Rabbit anti-Actin recombinant monoclonal antibody [BLR057F] (A700-057).

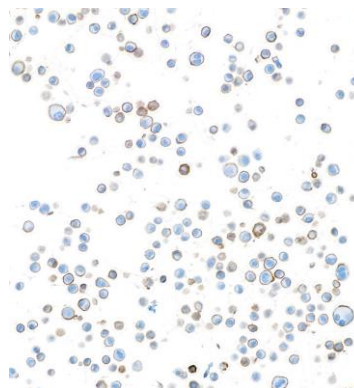


Detection of human Sodium Potassium ATPase alpha-1 by western blot of immunoprecipitates. *Samples:* Whole cell lysate (1.0 mg per IP reaction; 20% of IP loaded) from HeLa cells. *Antibody:* Mouse anti-Sodium Potassium ATPase alpha-1-Recombinant monoclonal antibody [BL-464.6] (A500-031 lot 1) used for IP at 20 µl/mg lysate. For blotting immunoprecipitated Sodium Potassium ATPase alpha-1, A500-031 was used at 1:1000. Chemiluminescence with an exposure time of 10 seconds.

Detection of human Sodium Potassium ATPase alpha-1 by immunohistochemistry. *Sample:* FFPE section of colon carcinoma. *Antibody:* Mouse anti-Sodium Potassium ATPase alpha-1 monoclonal antibody [464.6] (A500-031A lot 1). *Secondary:* HRP-conjugated goat anti-mouse IgG (A90-116P).



Detection of mouse Sodium Potassium ATPase alpha-1 by immunohistochemistry. *Sample:* FFPE section of mouse gut. *Antibody:* Mouse anti-Sodium Potassium ATPase alpha-1 monoclonal antibody [464.6] (A500-031A lot 1). *Secondary:* HRP-conjugated goat anti-mouse IgG (A90-116P).



Detection of human Sodium Potassium ATPase alpha-1 by immunocytochemistry. *Sample:* FFPE section of MDA-MB-435 cells. *Antibody:* Mouse anti-Sodium Potassium ATPase alpha-1 monoclonal antibody [464.6] (A500-031A lot 1). *Secondary:* HRP-conjugated goat anti-mouse IgG (A90-116P).