

# Fibronectin Monoclonal Antibody [TV-1]

Mouse Monoclonal

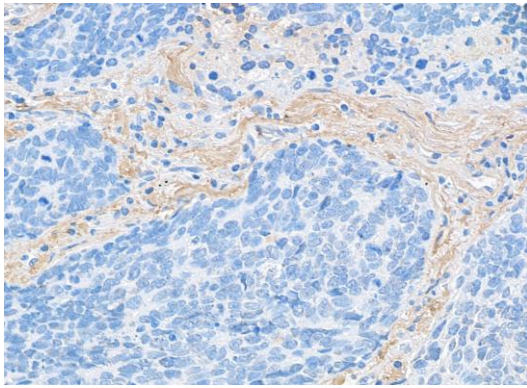
Purified		Protein ID	P02751
Catalog No.	A500-030A	GeneID	2335
Lot No.	A500-030A-1		



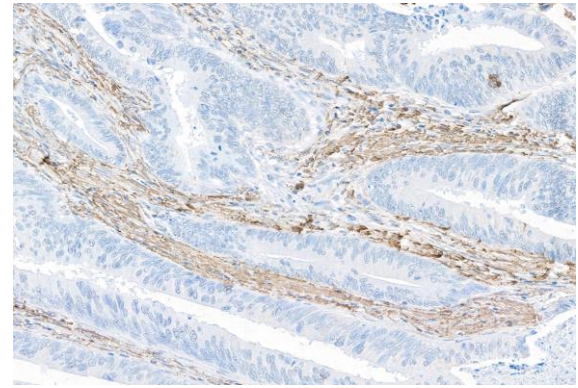
---

<b>APPLICATIONS</b>	IHC
<b>SPECIES REACTIVITY</b>	Human
<b>AMOUNT</b>	100 µl (50+ tests)
<b>CONCENTRATION</b>	50 µg/ml
<b>STORAGE/SHELF LIFE</b>	2 – 8° C / 1 year from date of receipt
<b>PHYSICAL STATE</b>	Liquid
<b>BUFFER</b>	Phosphate Buffered Saline (PBS) pH 8.2 with 0.1% BSA and 0.09% Sodium Azide
<b>ISOTYPE</b>	IgG1
<b>CLONE #</b>	TV-1
<b>ORIGIN</b>	USA
<b>PRODUCTION PROCEDURES</b>	Monoclonal antibody was purified from cell culture supernatant. Immunogen was a T-cell lymphoma biopsy.
<b>APPLICATIONS</b>	Centrifuge tube to remove product from lid. Optimal working dilutions should be determined experimentally by the investigator. Prepare working dilution immediately before use.  Immunohistochemistry 1:100 to 1:500. Epitope retrieval with citrate buffer pH6.0 is recommended for FFPE tissue sections.
<b>IHC HUMAN CONTROLS</b>	Breast Carcinoma, Colon Carcinoma, Lung Carcinoma, Ovarian Carcinoma, Placenta, Prostate Carcinoma, Seminoma, Testis
<b>ADDITIONAL INFO</b>	<a href="https://www.bethyl.com/product/A500-030A">https://www.bethyl.com/product/A500-030A</a> Use the link above to view SDS, a current list of citations, and other product specific information.

This document certifies that this product has met all of the quality control standards defined by Bethyl Laboratories, Inc.  
Brian McWilliams, PhD Date: August 26, 2021



**Detection of human Fibronectin by immunohistochemistry.** *Sample:* FFPE section of small cell lung cancer. *Antibody:* Mouse anti-Fibronectin monoclonal antibody [TV-1] (A500-030A lot 1). *Secondary:* HRP-conjugated goat anti-mouse IgG (A90-116P). *Substrate:* DAB



**Detection of human Fibronectin by immunohistochemistry.** *Samples:* FFPE section of colon carcinoma. *Antibody:* Mouse anti-Fibronectin monoclonal antibody [TV-1] (A500-030A lot 1). *Secondary:* HRP-conjugated goat anti-mouse IgG (A90-116P). *Substrate:* DAB