

p40 Monoclonal Antibody [BC28]

Mouse Monoclonal

Purified		Protein ID	Q9H3D4
Catalog No.	A500-028A	GeneID	8626
Lot No.	A500-028A-1		



APPLICATIONS	WB, IHC
SPECIES REACTIVITY	Human
AMOUNT	100 µl (50+ tests)
CONCENTRATION	250 µg/ml
STORAGE/SHELF LIFE	2 – 8° C / 1 year from date of receipt
PHYSICAL STATE	Liquid
BUFFER	Phosphate Buffered Saline (PBS) pH 8.2 with 0.1% BSA and 0.09% Sodium Azide
ISOTYPE	IgG1
CLONE #	BC28
ORIGIN	USA
PRODUCTION PROCEDURES	Monoclonal antibody was purified from cell culture supernatant.

Immunogen was a peptide representing a region between residue 0 and 50 of human p40 – DeltaNp63 (aka tumor protein 63 isoform 4) using the numbering given in entry NP_001108452.1 (Gene ID 8626).

APPLICATIONS Centrifuge tube to remove product from lid. Optimal working dilutions should be determined experimentally by the investigator. Prepare working dilution immediately before use.

Western Blot 1:1000

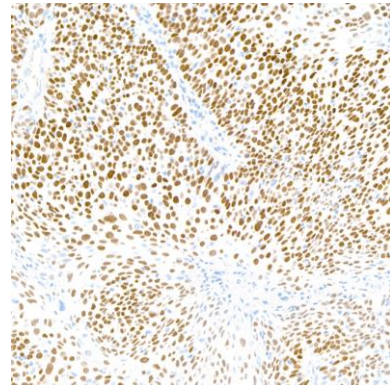
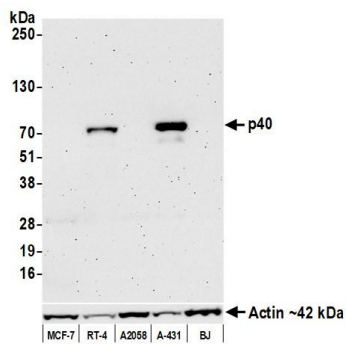
Immunohistochemistry 1:100 to 1:500. Epitope retrieval with citrate buffer pH6.0 is recommended for FFPE tissue sections.

IHC HUMAN CONTROLS Lung Carcinoma

ADDITIONAL INFO <https://www.bethyl.com/product/A500-028A>

Use the link above to view SDS, a current list of citations, and other product specific information.

This document certifies that this product has met all of the quality control standards defined by Bethyl Laboratories, Inc.
Brian McWilliams, PhD Date: August 26, 2021



Detection of human p40 by western blot. *Samples:* Whole cell lysate (50 μ g) from MCF-7, RT-4, A2058, A-431, and BJ cells prepared using NETN lysis buffer. *Antibody:* Mouse anti-p40 monoclonal antibody [BC28] (A500-028A lot 1) used at 1:1000. *Secondary:* HRP-conjugated goat anti-mouse IgG (A90-116P). Chemiluminescence with an exposure time of 3 minutes. Lower Panel: Rabbit anti-Actin recombinant monoclonal antibody [BLR057F] (A700-057).

Detection of human p40 in lung carcinoma by IHC. *Antibody:* Mouse anti-p40 monoclonal antibody [BC28] (A500-028A). *Secondary:* HRP-conjugated goat anti-mouse IgG (A90-116P). *Substrate:* DAB