

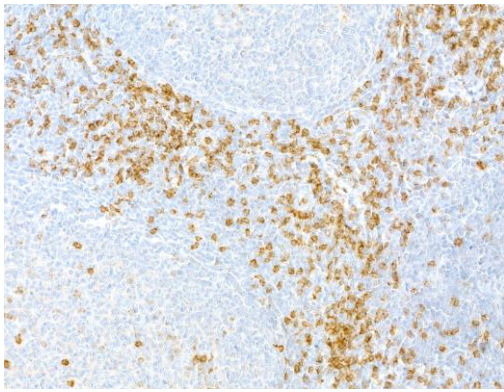
# CD8 alpha Monoclonal Antibody [C8/144B]

Mouse Monoclonal

Purified	Protein ID	NP_001759.3
Catalog No. A500-021A	GeneID	925
Lot No. A500-021A-2		

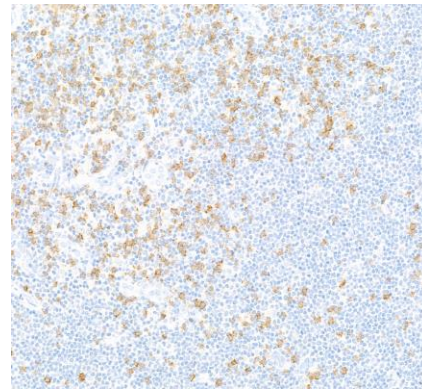
APPLICATIONS	IHC, IHC-IF, Flow Cyt
SPECIES REACTIVITY	Human
AMOUNT	100 µl (50+ tests)
CONCENTRATION	250 µg/ml
STORAGE/SHELF LIFE	2 – 8°C / 1 year from date of receipt
PHYSICAL STATE	Liquid
BUFFER	Borate Buffered Saline (BBS) pH 8.2 with 0.1% BSA and 0.09% Sodium Azide
ISOTYPE	IgG1
CLONE #	C8/144B
ORIGIN	USA
PRODUCTION PROCEDURES	The antibody was purified from cell culture supernatant.  Immunogen was a 13 amino acid synthetic peptide from the C-terminal cytoplasmic domain of alpha chain of human CD8 molecule
APPLICATIONS	Centrifuge tube to remove product from lid. Optimal working dilutions should be determined experimentally by the investigator. Prepare working dilution immediately before use.  Immunohistochemistry 1:100 – 1:500. Epitope retrieval with Tris-EDTA pH 9.0 is recommended for FFPE tissue sections.  Immunofluorescence (IHC) 1:100 to 1:500. Epitope retrieval with Tris-EDTA pH9.0 is recommended for FFPE tissue sections.  Flow Cytometry Fixed in 4% formaldehyde and permeabilized with 50% methanol. 2.5 µl per 1 x 10 <sup>6</sup> cells.
IHC HUMAN CONTROLS	Hodgkins Lymphoma, Metastatic Lymph Node, Tonsil, Tumor-infiltrating Lymphocytes
ADDITIONAL INFO	<a href="https://www.fortislife.com/p/A500-021A">https://www.fortislife.com/p/A500-021A</a> Use the link above to view SDS, a current list of citations, and other product specific information.

This document certifies that this product has met all of the quality control standards defined by Bethyl Laboratories, Inc.  
Michael Spencer, PhD Date: August 11, 2022

**Detection of human CD8a by immunohistochemistry.**

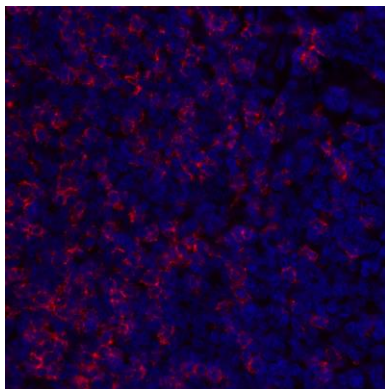
*Sample:* FFPE section of tonsil. *Antibody:* Mouse anti-CD8a monoclonal antibody [C8/144B] (A500-021A-2).

*Secondary:* HRP-conjugated goat anti-mouse IgG (A90-116P).

**Detection of human CD8a by immunohistochemistry.**

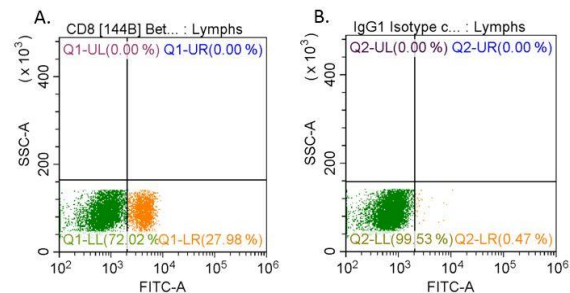
*Sample:* FFPE section of Hodgkin lymphoma. *Antibody:* Mouse anti-CD8a monoclonal antibody [C8/144B]

(A500-021A-2). *Secondary:* HRP-conjugated goat anti-mouse IgG (A90-116P).

**Detection of human CD8 alpha by immunohistochemistry.**

*Sample:* FFPE section of human tonsil. *Antibody:* Mouse monoclonal anti-CD8 alpha antibody [C8/144B]

(A500-021A lot 1) used at 1:100. *Secondary:* DyLight® 594-conjugated goat anti-mouse IgG (A90-116D4).



**Flow cytometric detection of CD8 alpha in human whole blood.** Human whole blood was fixed in 4% formaldehyde. Red blood cells were lysed, and the sample was treated with 50% methanol.  $1 \times 10^6$  cells were incubated with 2.5  $\mu$ l of mouse monoclonal anti-CD8 alpha antibody [C8/144B] (A500-021A) (A) or 0.1  $\mu$ g mouse IgG1 isotype control (B). Antibody binding was detected with 0.05  $\mu$ g DyLight® 488-conjugated goat anti-mouse IgG [A90-116D2]. Gated on peripheral blood lymphocytes.