

# BRD2 Monoclonal Antibody [12C2E4]

Mouse Monoclonal

Antigen Affinity Purified Protein ID NP\_005095.1

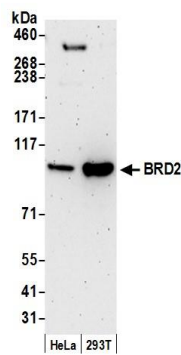
Catalog No. A500-014A GeneID 6046

Lot No. A500-014A-2

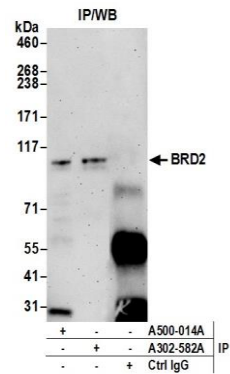


<b>APPLICATIONS</b>	WB, IP
<b>SPECIES REACTIVITY</b>	Human
<b>PRESUMED REACTIVITY</b>	Based on 100% sequence identity, this antibody is predicted to react with Mouse, Bovine, Dog, Horse, Guinea pig_10141, Pig, Panda, Orangutan, Monkey, Gorilla, Chimpanzee and Chinese hamster
<b>AMOUNT</b>	100 µl (10 blots)
<b>CONCENTRATION</b>	40 µg/ml
<b>STORAGE/SHELF LIFE</b>	2 – 8° C / 1 year from date of receipt
<b>PHYSICAL STATE</b>	Liquid
<b>BUFFER</b>	Tris-buffered Saline containing 0.1% BSA and 0.09% Sodium Azide
<b>ISOTYPE</b>	IgG1-kappa
<b>CLONE #</b>	12C2E4
<b>ORIGIN</b>	USA
<b>PRODUCTION PROCEDURES</b>	Antibody was affinity purified using an epitope specific for BRD2 immobilized on solid support. The epitope recognized by A500-014A maps to a region between residue 675 and 725 of human bromodomain containing 2 using the numbering given in entry NP_005095.1 (GeneID 6046).
<b>APPLICATIONS</b>	Centrifuge tube to remove product from lid. Optimal working dilutions should be determined experimentally by the investigator. Prepare working dilution immediately before use.  Western Blot 1:1000 Immunoprecipitation 20 µl/mg lysate
<b>APPLICATION NOTES</b>	Validation by IP/Western Blot was performed using a 4–8% SDS-PAGE.
<b>ADDITIONAL INFO</b>	<a href="https://www.bethyl.com/product/A500-014A">https://www.bethyl.com/product/A500-014A</a> Use the link above to view SDS, a current list of citations, and other product specific information.

This document certifies that this product has met all of the quality control standards defined by Bethyl Laboratories, Inc.  
Eric McIntush, PhD | Chief Scientific Officer Date: June 21, 2019



**Detection of human BRD2 by western blot.** *Samples:* Whole cell lysate (15 µg) from HeLa and 293T cells prepared using NETN lysis buffer. *Antibody:* Mouse monoclonal anti-BRD2 antibody [12C2E4] (A500-014A lot 2) used for WB at 1:1000. *Secondary:* HRP-conjugated goat anti-mouse IgG (A90-116P). Chemiluminescence with an exposure time of 3 minutes.



**Detection of human BRD2 by western blot of immunoprecipitates.** *Samples:* Whole cell lysate (0.5 or 1.0 mg per IP reaction; 20% of IP loaded) from 293T cells prepared using NETN lysis buffer. *Antibodies:* Mouse monoclonal anti-BRD2 antibody [12C2E4] (A500-014A lot 2) used for IP at 20 µl per reaction. BRD2 was also immunoprecipitated by rabbit anti-BRD2 antibody (A302-582A). For blotting immunoprecipitated BRD2, A500-014A was used at 1:1000. *Secondary:* HRP-conjugated goat anti-mouse IgG (A90-116P). Chemiluminescence with an exposure time of 3 minutes.