

# IGF2BP2 Monoclonal Antibody [1E3.01E5]

Mouse Monoclonal

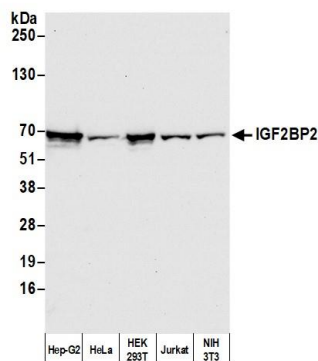
|             |             |            |                |
|-------------|-------------|------------|----------------|
| Purified    |             | Protein ID | NP_001007226.1 |
| Catalog No. | A500-012A   | GeneID     | 10644          |
| Lot No.     | A500-012A-4 |            |                |



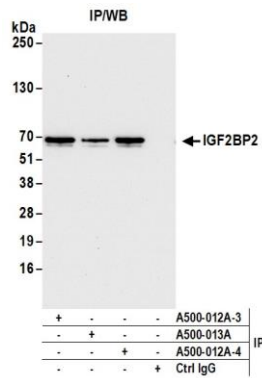
|                       |   |              |        |                     |                 |
|-----------------------|---|--------------|--------|---------------------|-----------------|
| APPLICATIONS          | WB, IP  |              |        |                     |                 |
| SPECIES REACTIVITY    | Human, Mouse  |              |        |                     |                 |
| AMOUNT                | 100 µl (10 blots)   |              |        |                     |                 |
| CONCENTRATION         | 40 µg/ml  |              |        |                     |                 |
| STORAGE/SHELF LIFE    | 2 – 8° C / 1 year from date of receipt  |              |        |                     |                 |
| PHYSICAL STATE        | Liquid  |              |        |                     |                 |
| BUFFER                | Tris-buffered Saline containing 0.1% BSA and 0.09% Sodium Azide   |              |        |                     |                 |
| ISOTYPE               | IgG1-kappa  |              |        |                     |                 |
| CLONE #               | 1E3.01E5  |              |        |                     |                 |
| ORIGIN                | USA   |              |        |                     |                 |
| PRODUCTION PROCEDURES | <p>The immunogen was the full length recombinant human protein IGF mRNA-binding protein 2 (GeneID 10644). The hybridoma was grown in a bioreactor and the antibody was purified using a mouse immunoglobulin binding ligand.</p> <p>Isotype was determined by immunoelectrophoresis.</p>  |              |        |                     |                 |
| APPLICATIONS          | <p>Centrifuge tube to remove product from lid. Optimal working dilutions should be determined experimentally by the investigator. Prepare working dilution immediately before use.</p> <table><tbody><tr><td>Western Blot</td><td>1:1000</td></tr><tr><td>Immunoprecipitation</td><td>20 µl/mg lysate</td></tr></tbody></table> | Western Blot | 1:1000 | Immunoprecipitation | 20 µl/mg lysate |
| Western Blot          | 1:1000  |              |        |                     |                 |
| Immunoprecipitation   | 20 µl/mg lysate   |              |        |                     |                 |
| APPLICATION NOTES     | Validation by IP/Western Blot was performed using a 4–20% SDS–PAGE.   |              |        |                     |                 |
| ADDITIONAL INFO       | <p><a href="https://www.bethyl.com/product/A500-012A">https://www.bethyl.com/product/A500-012A</a></p> <p>Use the link above to view SDS, a current list of citations, and other product specific information.</p>  |              |        |                     |                 |

This document certifies that this product has met all of the quality control standards defined by Bethyl Laboratories, Inc.  
Eric McIntush, PhD | Chief Scientific Officer

Date: February 27, 2020



**Detection of human and mouse IGF2BP2 by western blot.**  
*Samples:* Whole cell lysate (50 µg) from Hep-G2, HeLa, HEK293T, Jurkat, and NIH 3T3 cells prepared using NETN lysis buffer. *Antibody:* Mouse anti-IGF2BP2 monoclonal antibody [1E3.01E5] (A500-012A lot 4) used at 1:1000. *Secondary:* HRP-conjugated goat anti-mouse IgG (A90-116P). Chemiluminescence with an exposure time of 10 seconds.



**Detection of human IGF2BP2 by western blot of immunoprecipitates.** *Samples:* Whole cell lysate (1.0 mg per IP reaction; 20% of IP loaded) from Hep-G2 cells prepared using NETN lysis buffer. *Antibodies:* Mouse anti-IGF2BP2 monoclonal antibody [1E3.01E5] (A500-012A lot 4) used for IP at 8 µl per reaction. IGF2BP2 was also immunoprecipitated by a previous lot of this antibody (lot A500-012A-3) and mouse anti-IGF2BP2 antibody A500-013A. For blotting immunoprecipitated IGF2BP2, A500-012A was used at 1:1000. Chemiluminescence with an exposure time of 10 seconds.