

MOV10 Monoclonal Antibody [15C1B8]

Mouse Monoclonal

Antigen Affinity Purified Protein ID NP_066014.1

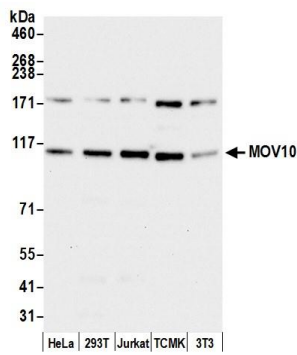
Catalog No. A500-009A GeneID 4343

Lot No. A500-009A-3

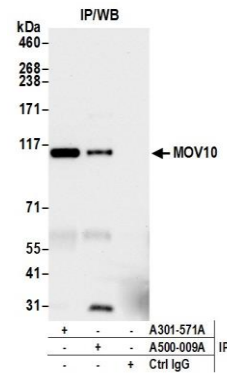


APPLICATIONS	WB, IP, IHC
SPECIES REACTIVITY	Human, Mouse
PRESUMED REACTIVITY	Based on 100% sequence identity, this antibody is predicted to react with Bovine, Dog, Horse, Rabbit, Guinea pig_10141, Panda, Orangutan, Monkey, Gorilla, Chimpanzee and Naked mole rat
AMOUNT	100 µl (10 blots)
CONCENTRATION	40 µg/ml
STORAGE/SHELF LIFE	2 – 8° C / 1 year from date of receipt
PHYSICAL STATE	Liquid
BUFFER	Tris-buffered Saline containing 0.1% BSA and 0.09% Sodium Azide
ISOTYPE	IgG1-kappa
CLONE #	15C1B8
ORIGIN	USA
PRODUCTION PROCEDURES	Antibody was affinity purified using an epitope specific to MOV10 immobilized on solid support. The epitope recognized by A500-009A maps to a region between residue 953 and 1003 of human Moloney leukemia virus 10, homolog using the numbering given in entry NP_066014.1 (GeneID 4343).
APPLICATIONS	Centrifuge tube to remove product from lid. Optimal working dilutions should be determined experimentally by the investigator. Prepare working dilution immediately before use.
	Western Blot 1:1000
	Immunoprecipitation 20 µl/mg lysate
	Immunohistochemistry 1:20 – 1:80. Epitope retrieval with citrate buffer pH 6.0 is recommended for FFPE tissue sections.
APPLICATION NOTES	Validation by IP/Western Blot was performed using a 4–8% SDS–PAGE.
ADDITIONAL INFO	https://www.bethyl.com/product/A500-009A Use the link above to view SDS, a current list of citations, and other product specific information.

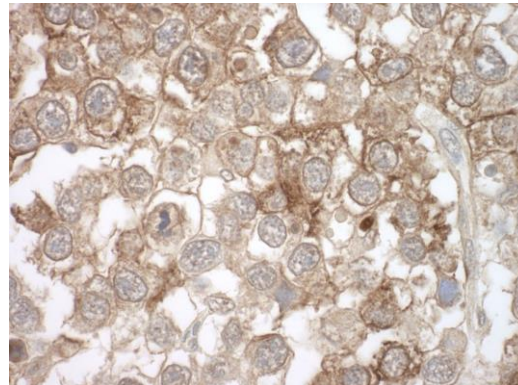
This document certifies that this product has met all of the quality control standards defined by Bethyl Laboratories, Inc.
Eric McIntush, PhD | Chief Scientific Officer Date: July 26, 2019



Detection of human and mouse MOV10 by western blot.
Samples: Whole cell lysate (15 µg) from HeLa, HEK293T, Jurkat, mouse TCMK-1, and mouse NIH 3T3 cells prepared using NETN lysis buffer. *Antibody:* Mouse monoclonal anti-MOV10 antibody [15C1B8] (A500-009A lot 3) used at 1:1000. *Secondary:* HRP-conjugated goat anti-mouse IgG (A90-116P). Chemiluminescence with an exposure time of 10 seconds.



Detection of human MOV10 by western blot of immunoprecipitates. *Samples:* Whole cell lysate (0.5 or 1.0 mg per IP reaction; 20% of IP loaded) from HeLa cells prepared using NETN lysis buffer. *Antibodies:* Mouse monoclonal anti-MOV10 antibody [15C1B8] (A500-009A lot 3) used for IP at 20 µl per reaction. MOV10 was also immunoprecipitated by rabbit anti-MOV10 antibody A301-571A. For blotting immunoprecipitated MOV10, A500-009A was used at 1:1000. *Secondary:* HRP-conjugated goat anti-mouse IgG (A90-116P). Chemiluminescence with an exposure time of 10 seconds.



Detection of human MOV10 by immunohistochemistry.
Sample: FFPE section of human testicular seminoma.
Antibody: mouse monoclonal MOV10 antibody [15C1B8] (A500-009A lot 2) used at 1:50. *Secondary:* HRP-conjugated goat anti-mouse IgG (A90-116P). *Substrate:* DAB.