

REDD1 Monoclonal Antibody [1G11]

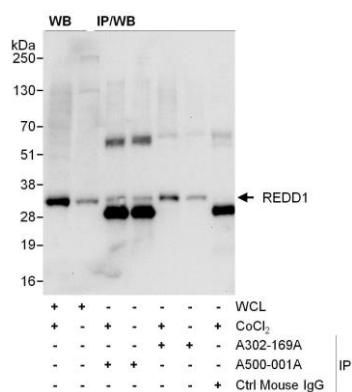
Mouse Monoclonal

Purified Protein ID NP_061931.1
Catalog No. A500-001A GeneID 54541
Lot No. A500-001A-2

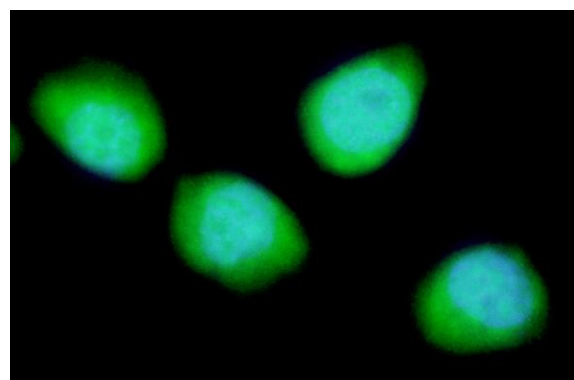


APPLICATIONS	WB, IP, ICC
SPECIES REACTIVITY	Human
AMOUNT	100 µl (10 blots)
CONCENTRATION	1000 µg/ml
STORAGE/SHELF LIFE	2 - 8° C / 1 year from date of receipt
PHYSICAL STATE	Liquid
BUFFER	Tris-citrate/phosphate buffer, pH 7 to 8 containing 0.09% Sodium Azide
ISOTYPE	IgG1-kappa
CLONE #	1G11
ORIGIN	USA
PRODUCTION PROCEDURES	Antibody against human REDD1 (GeneID 54541) was produced in a bioreactor and then purified using a mouse immunoglobulin binding ligand.
APPLICATIONS	Centrifuge tube to remove product from lid. Optimal working dilutions should be determined experimentally by the investigator. Prepare working dilution immediately before use. Western Blot 1:1000 Immunoprecipitation 3 µl/mg lysate Immunocytochemistry 1:100 - 1:500
APPLICATION NOTES	Validation by IP/Western Blot was performed using a 4-20% SDS-PAGE.
ADDITIONAL INFO	https://www.bethyl.com/product/A500-001A Use the link above to view SDS, a current list of citations, and other product specific information.

This document certifies that this product has met all of the quality control standards defined by Bethyl Laboratories, Inc.
Eric McIntush, PhD | Chief Scientific Officer Date: June 21, 2019



Detection of human REDD1 by western blot and immunoprecipitation. *Samples:* Whole cell lysate (WCL) [50 µg for WB; 1 mg for IP, 20% of IP loaded] from HeLa cells. Lysate was prepared from untreated (-) cells or cells treated (+) with CoCl₂. *Antibodies:* Mouse monoclonal anti-REDD1 antibody [1G11] (A500-001A lot 1) was used at 1:1000 for WB and 3 µl/mg of lysate for IP. REDD1 was also immunoprecipitated (lanes 5&6) by rabbit anti-REDD1 antibody (A302-169A). *Secondary:* HRP-conjugated goat anti-mouse IgG (A90-116P). Chemiluminescence with an exposure time of 10 seconds.



Detection of human REDD1 by immunocytochemistry. *Sample:* Formaldehyde-fixed, CoCl₂ treated, asynchronous HeLa cells. *Antibody:* Mouse monoclonal anti-REDD1 [1G11] (A500-001A lot 2) used at a dilution of 1:250. *Secondary:* FITC-conjugated goat anti-mouse IgG antibody (A90-116F).