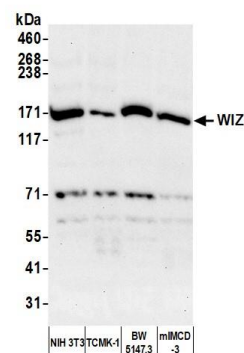


**Detection of human WIZ by western blot.** *Samples:* Whole cell lysate (50  $\mu$ g) from HEK293T, MCF-7, HeLa, LNCaP, and A-549 cells prepared using NETN lysis buffer. *Antibody:* Affinity purified rabbit anti-WIZ antibody (A305-864A-2 lot 1) used for WB at 1  $\mu$ g/ml. *Detection:* Chemiluminescence with an exposure time of 30 seconds.



**Detection of mouse WIZ by western blot.** *Samples:* Whole cell lysate (50  $\mu$ g) from NIH 3T3, TCMK-1, BW5147.3, and mIMCD-3 cells prepared using NETN lysis buffer. *Antibody:* Affinity purified rabbit anti-WIZ antibody (A305-864A lot 2) used for WB at 1  $\mu$ g/ml. *Detection:* Chemiluminescence with an exposure time of 75 seconds.