

# CLPTM1L Antibody

Rabbit Polyclonal

Antigen Affinity Purified

RefSeq ID NP\_110409.2

Catalog No. A305-806A-T

Uniprot ID Q96KA5

Lot No. 2

GeneID 81037

---

<b>APPLICATIONS</b>	WB, IP
<b>SPECIES REACTIVITY</b>	Human
<b>PRESUMED REACTIVITY</b>	Based on 100% sequence identity, this antibody is predicted to react with Orangutan
<b>AMOUNT</b>	10 µl
<b>CONCENTRATION</b>	1000 µg/ml
<b>STORAGE/SHELF LIFE</b>	2 – 8°C / 1 year from date of receipt
<b>PHYSICAL STATE</b>	Liquid
<b>BUFFER</b>	Tris-citrate/phosphate buffer, pH 7 to 8 containing 0.09% Sodium Azide
<b>ISOTYPE</b>	IgG
<b>ORIGIN</b>	USA
<b>PRODUCTION PROCEDURES</b>	Antibody was affinity purified using an epitope specific to CLPTM1L immobilized on solid support.

The epitope recognized by A305-806A-T maps to a region between residue 150 and 200 of human Cleft lip and palate transmembrane protein 1-like protein using the numbering given in entry Q96KA5.1 (GeneID 81037).

Antibody concentration was determined by extinction coefficient: absorbance at 280 nm of 1.4 equals 1.0 mg of IgG.

**APPLICATIONS** Centrifuge tube to remove product from lid. Optimal working dilutions should be determined experimentally by the investigator. Prepare working dilution immediately before use.

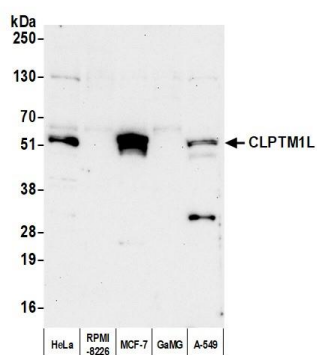
Western Blot 1:10,000 – 1:25,000

Immunoprecipitation 2–10 µg/mg lysate

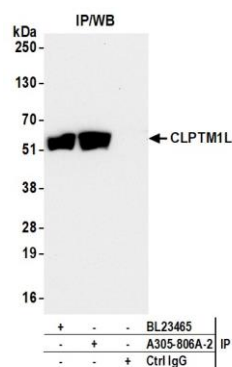
**ADDITIONAL INFO** <https://www.fortislife.com/p/A305-806A-T>

Use the link above to view SDS, a current list of citations, and other product specific information.

This document certifies that this product has met all of the quality control standards defined by Bethyl Laboratories, Inc.  
Michael Spencer, PhD Date: June 28, 2023



**Detection of human CLPTM1L by western blot.** *Samples:* Whole cell lysate (25  $\mu$ g) from HeLa, RPMI-8226, MCF-7, GaMG, and A-549 cells prepared using NETN lysis buffer. *Antibody:* Affinity purified rabbit anti-CLPTM1L antibody (A305-806A lot 2) used for WB at 0.1  $\mu$ g/ml. *Detection:* Chemiluminescence with an exposure time of 30 seconds.



**Detection of human CLPTM1L by western blot of immunoprecipitates.** *Samples:* Whole cell lysate (1 mg per IP; 5% of IP loaded) from MCF-7 cells prepared using NETN lysis buffer. *Antibodies:* Affinity purified rabbit anti-CLPTM1L antibody (A305-806A lot 2) used for IP at 6  $\mu$ g per reaction. CLPTM1L was also immunoprecipitated by a second antibody against a different epitope of CLPTM1L (BL23465). For blotting immunoprecipitated CLPTM1L, A305-806A was used at 0.04  $\mu$ g/ml. *Detection:* Chemiluminescence with an exposure time of 30 seconds.