

GGCT Antibody

Rabbit Polyclonal

Antigen Affinity Purified

Protein ID O75223.1

Catalog No. A305-563A

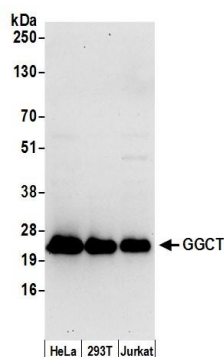
GeneID 79017

Lot No. A305-563A-1

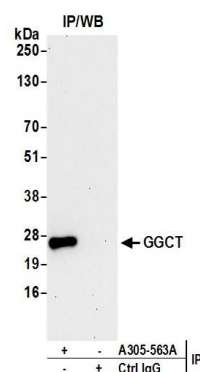


APPLICATIONS	WB, IP
SPECIES REACTIVITY	Human
AMOUNT	100 µl
CONCENTRATION	1000 µg/ml
STORAGE/SHELF LIFE	2 - 8° C / 1 year from date of receipt
PHYSICAL STATE	Liquid
BUFFER	Tris-citrate/phosphate buffer, pH 7 to 8 containing 0.09% Sodium Azide
ISOTYPE	IgG
ORIGIN	USA
PRODUCTION PROCEDURES	<p>Antibody was affinity purified using an epitope specific to GGCT immobilized on solid support.</p> <p>The epitope recognized by A305-563A maps to a region between residue 138 to 188 of human Gamma-glutamylcyclotransferase using the numbering given in entry O75223.1 (GeneID 79017).</p> <p>Antibody concentration was determined by extinction coefficient: absorbance at 280 nm of 1.4 equals 1.0 mg of IgG.</p>
APPLICATIONS	<p>Centrifuge tube to remove product from lid. Optimal working dilutions should be determined experimentally by the investigator. Prepare working dilution immediately before use.</p> <p>Western Blot 1:1,000 - 1:5,000</p> <p>Immunoprecipitation 2 - 10 µg/mg lysate</p>
APPLICATION NOTES	Western blot of immunoprecipitates performed using Normal Pig Serum (Cat. No. S100-020), Goat anti-Rabbit Light Chain HRP Conjugate (Cat. No. A120-113P) and 4-8% SDS-PAGE. (link to IP-western blot protocol in Additional Info section below).
ADDITIONAL INFO	<p>https://www.bethyl.com/product/A305-563A</p> <p>Use the link above to view SDS, a current list of citations, and other product specific information. IP-western blot protocol: https://www.bethyl.com/content/protocol_IP_WB</p>

This document certifies that this product has met all of the quality control standards defined by Bethyl Laboratories, Inc.
Eric McIntush, PhD | Chief Scientific Officer Date: June 21, 2019



Detection of human GGCT by western blot. *Samples:* Nuclear extract (50 µg) from HeLa, HEK293T, and Jurkat cells prepared using NETN lysis buffer. *Antibody:* Affinity purified rabbit anti-GGCT antibody A305-563A (lot A305-563A-1) used for WB at 0.4 µg/ml. *Detection:* Chemiluminescence with an exposure time of 30 seconds.



Detection of human GGCT by western blot of immunoprecipitates. *Samples:* Whole cell lysate (0.5 or 1.0 mg per IP reaction; 20% of IP loaded) from 293T cells prepared using NETN lysis buffer. *Antibodies:* Affinity purified rabbit anti-GGCT antibody A305-563A (lot A305-563A-1) used for IP at 6 µg per reaction. For blotting immunoprecipitated GGCT, A305-563A was used at 1 µg/ml. *Detection:* Chemiluminescence with an exposure time of 30 seconds.