

FKBP10 Antibody

Rabbit Polyclonal

Antigen Affinity Purified

Protein ID Q96AY3.1

Catalog No. A305-559A

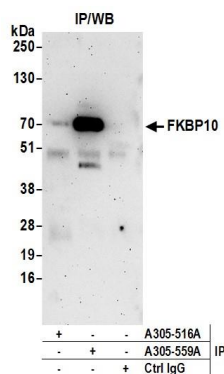
GeneID 60681

Lot No. A305-559A-1



APPLICATIONS	IP
SPECIES REACTIVITY	Human
PRESUMED REACTIVITY	Based on 100% sequence identity, this antibody is predicted to react with Bovine
AMOUNT	100 µl
CONCENTRATION	1000 µg/ml
STORAGE/SHELF LIFE	2 - 8° C / 1 year from date of receipt
PHYSICAL STATE	Liquid
BUFFER	Tris-citrate/phosphate buffer, pH 7 to 8 containing 0.09% Sodium Azide
ISOTYPE	IgG
ORIGIN	USA
PRODUCTION PROCEDURES	<p>Antibody was affinity purified using an epitope specific to FKBP10 immobilized on solid support.</p> <p>The epitope recognized by A305-559A maps to a region between residue 532 to 582 of human Peptidyl-prolyl cis-trans isomerase FKBP10 using the numbering given in entry Q96AY3.1 (GeneID 60681).</p> <p>Antibody concentration was determined by extinction coefficient: absorbance at 280 nm of 1.4 equals 1.0 mg of IgG.</p>
APPLICATIONS	<p>Centrifuge tube to remove product from lid. Optimal working dilutions should be determined experimentally by the investigator. Prepare working dilution immediately before use.</p> <p>Western Blot Not recommended. A305-559A has not performed satisfactorily when used for WB of FKBP10 in crude preparations (e.g. whole cell lysate). This antibody can be used for WB of enriched (e.g. immunoprecipitated) sources of FKBP10.</p> <p>Immunoprecipitation 2 - 10 µg/mg lysate</p>
APPLICATION NOTES	Western blot of immunoprecipitates performed using Normal Pig Serum (Cat. No. S100-020), Goat anti-Rabbit Light Chain HRP Conjugate (Cat. No. A120-113P) and 4-20% SDS-PAGE (link to IP-western blot protocol in Additional Info section below).
ADDITIONAL INFO	<p>https://www.bethyl.com/product/A305-559A</p> <p>Use the link above to view SDS, a current list of citations, and other product specific information.</p> <p>IP-western blot protocol: https://www.bethyl.com/content/protocol_IP_WB</p>

This document certifies that this product has met all of the quality control standards defined by Bethyl Laboratories, Inc.
Eric McIntush, PhD | Chief Scientific Officer Date: June 21, 2019



Detection of human FKBP10 by western blot of immunoprecipitates. *Samples:* Whole cell lysate (0.5 or 1.0 mg per IP reaction; 20% of IP loaded) from 293T and cells prepared using NETN lysis buffer. *Antibodies:* Affinity purified rabbit anti-FKBP10 antibody A305-559A (lot A305-559A-1) used for IP at 6 µg per reaction. FKBP10 was also immunoprecipitated by rabbit anti-FKBP10 antibody A305-516A. For blotting immunoprecipitated FKBP10, A305-559A was used at 1 µg/ml. *Detection:* Chemiluminescence with an exposure time of 3 minutes.