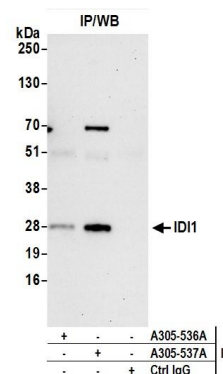


Detection of human IDI1 by western blot. *Samples:* Whole cell lysate (50 µg) from HeLa, HEK293T, and Jurkat cells prepared using NETN lysis buffer. *Antibody:* Affinity purified rabbit anti-IDI1 antibody A305-537A (lot A305-537A-1) used for WB at 0.4 µg/ml. *Detection:* Chemiluminescence with an exposure time of 30 seconds.



Detection of human IDI1 by western blot of immunoprecipitates. *Samples:* Whole cell lysate (0.5 or 1.0 mg per IP reaction; 20% of IP loaded) from 293T cells prepared using NETN lysis buffer. *Antibodies:* Affinity purified rabbit anti-IDI1 antibody A305-537A (lot A305-537A-1) used for IP at 6 µg per reaction. IDI1 was also immunoprecipitated by rabbit anti-IDI1 antibody A305-536A. For blotting immunoprecipitated IDI1, A305-537A was used at 1 µg/ml. *Detection:* Chemiluminescence with an exposure time of 30 seconds.