

# ATP5H Antibody

Rabbit Polyclonal

Antigen Affinity Purified

Protein ID O75947.3

Catalog No. A305-491A

GeneID 10476

Lot No. A305-491A-1



<b>APPLICATIONS</b>	WB, IP
<b>SPECIES REACTIVITY</b>	Human
<b>AMOUNT</b>	100 µl
<b>CONCENTRATION</b>	1000 µg/ml
<b>STORAGE/SHELF LIFE</b>	2 - 8° C / 1 year from date of receipt
<b>PHYSICAL STATE</b>	Liquid
<b>BUFFER</b>	Tris-citrate/phosphate buffer, pH 7 to 8 containing 0.09% Sodium Azide
<b>ISOTYPE</b>	IgG
<b>ORIGIN</b>	USA

**PRODUCTION PROCEDURES** Antibody was affinity purified using an epitope specific to ATP5H immobilized on solid support. The epitope recognized by A305-491A maps to a region between residue 100 to 150 of human ATP synthase subunit d, mitochondrial using the numbering given in entry O75947.3 (GeneID 10476).

Antibody concentration was determined by extinction coefficient: absorbance at 280 nm of 1.4 equals 1.0 mg of IgG.

**APPLICATIONS** Centrifuge tube to remove product from lid. Optimal working dilutions should be determined experimentally by the investigator. Prepare working dilution immediately before use.

Western Blot 1:2,000 - 1:10,000

Immunoprecipitation 2 - 10 µg/mg lysate

**APPLICATION NOTES** Western blot of immunoprecipitates performed using Normal Pig Serum (Cat. No. S100-020), Goat anti-Rabbit Light Chain HRP Conjugate (Cat. No. A120-113P) and 4-12% SDS-PAGE (link to IP-western blot protocol in Additional Info section below).

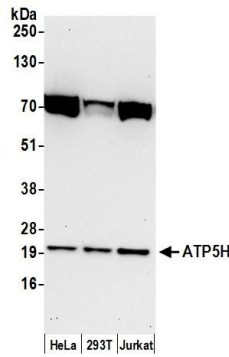
Western blot of lysates performed using standard western blot reagents and 4-12% SDS-PAGE.

**ADDITIONAL INFO** <https://www.bethyl.com/product/A305-491A>

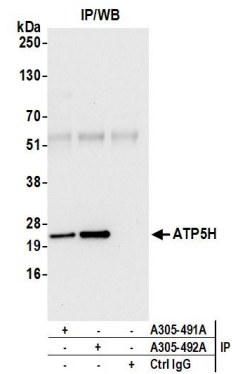
Use the link above to view SDS, a current list of citations, and other product specific information.

IP-western blot protocol: [https://www.bethyl.com/content/protocol\\_IP\\_WB](https://www.bethyl.com/content/protocol_IP_WB)

This document certifies that this product has met all of the quality control standards defined by Bethyl Laboratories, Inc.  
Eric McIntush, PhD | Chief Scientific Officer Date: June 21, 2019



**Detection of human ATP5H by western blot.** *Samples:* Whole cell lysate (50  $\mu$ g) from HeLa, HEK293T, and Jurkat cells prepared using NETN lysis buffer. *Antibody:* Affinity purified rabbit anti-ATP5H antibody A305-491A (lot A305-491A-1) used for WB at 0.1  $\mu$ g/ml. *Detection:* Chemiluminescence with an exposure time of 30 seconds.



**Detection of human ATP5H by western blot of immunoprecipitates.** *Samples:* Whole cell lysate (0.5 or 1.0 mg per IP reaction; 20% of IP loaded) from 293T cells prepared using NETN lysis buffer. *Antibodies:* Affinity purified rabbit anti-ATP5H antibody A305-491A (lot A305-491A-1) used for IP at 6  $\mu$ g per reaction. ATP5H was also immunoprecipitated by rabbit anti-ATP5H antibody A305-492A. For blotting immunoprecipitated ATP5H, A305-491A was used at 1  $\mu$ g/ml. *Detection:* Chemiluminescence with an exposure time of 10 seconds.