

SLC39A6 Antibody

Rabbit Polyclonal

Antigen Affinity Purified Protein ID Q13433.3

Catalog No. A305-490A GeneID 25800

Lot No. A305-490A-1



APPLICATIONS	IP
SPECIES REACTIVITY	Human
AMOUNT	100 µl
CONCENTRATION	1000 µg/ml
STORAGE/SHELF LIFE	2 – 8° C / 1 year from date of receipt
PHYSICAL STATE	Liquid
BUFFER	Tris-citrate/phosphate buffer, pH 7 to 8 containing 0.09% Sodium Azide
ISOTYPE	IgG
ORIGIN	USA
PRODUCTION PROCEDURES	Antibody was affinity purified using an epitope specific to SLC39A6 immobilized on solid support.

The epitope recognized by A305-490A maps to a region between residue 125 to 175 of human Zinc transporter ZIP6 using the numbering given in entry Q13433.3 (GeneID 25800).

Antibody concentration was determined by extinction coefficient: absorbance at 280 nm of 1.4 equals 1.0 mg of IgG.

APPLICATIONS Centrifuge tube to remove product from lid. Optimal working dilutions should be determined experimentally by the investigator. Prepare working dilution immediately before use.

Western Blot Not recommended. Use rabbit anti-SLC39A6 antibody A305-489A.

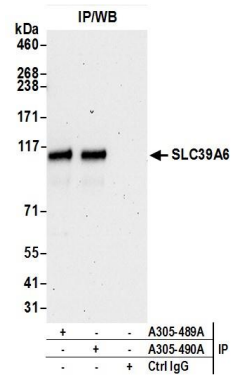
Immunoprecipitation 2 – 10 µg/mg lysate

APPLICATION NOTES Western blot of immunoprecipitates performed using Normal Pig Serum (Cat. No. S100-020), Goat anti-Rabbit Light Chain HRP Conjugate (Cat. No. A120-113P) and 4-8% SDS-PAGE (link to IP-western blot protocol in Additional Info section below).

ADDITIONAL INFO <https://www.bethyl.com/product/A305-490A>

Use the link above to view SDS, a current list of citations, and other product specific information. IP-western blot protocol: https://www.bethyl.com/content/protocol_IP_WB

This document certifies that this product has met all of the quality control standards defined by Bethyl Laboratories, Inc.
Eric McIntush, PhD | Chief Scientific Officer Date: June 21, 2019



Detection of human SLC39A6 by western blot of immunoprecipitates. *Samples:* Whole cell lysate (0.5 or 1.0 mg per IP reaction; 20% of IP loaded) from HeLa cells prepared using NETN lysis buffer. *Antibodies:* Affinity purified rabbit anti-SLC39A6 antibody A305-490A (lot A305-490A-1) used for IP at 6 µg per reaction. SLC39A6 was also immunoprecipitated by rabbit anti-SLC39A6 antibody A305-489A. For blotting immunoprecipitated SLC39A6, A305-490A was used at 0.4 µg/ml. *Detection:* Chemiluminescence with an exposure time of 75 seconds.