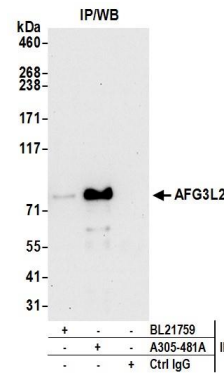


**Detection of human AFG3L2 by western blot.** *Samples:* Whole cell lysate (50 µg) from HeLa, HEK293T, and Jurkat cells prepared using NETN lysis buffer. *Antibody:* Affinity purified rabbit anti-AFG3L2 antibody A305-481A (lot A305-481A-1) used for WB at 0.1 µg/ml. *Detection:* Chemiluminescence with an exposure time of 30 seconds.



**Detection of human AFG3L2 by western blot of immunoprecipitates.** *Samples:* Whole cell lysate (0.5 or 1.0 mg per IP reaction; 20% of IP loaded) from 293T cells prepared using NETN lysis buffer. *Antibodies:* Affinity purified rabbit anti-AFG3L2 antibody A305-481A (lot A305-481A-1) used for IP at 6 µg per reaction. AFG3L2 was also immunoprecipitated by rabbit anti-AFG3L2 antibody BL21759. For blotting immunoprecipitated AFG3L2, A305-481A was used at 0.4 µg/ml. *Detection:* Chemiluminescence with an exposure time of 30 seconds.