

# WDR1 Antibody

Rabbit Polyclonal

Antigen Affinity Purified

Protein ID O75083.4

Catalog No. A305-471A

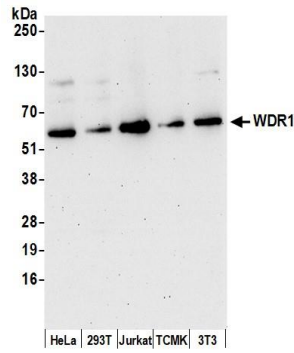
GeneID 9948

Lot No. A305-471A-1



|                              |   |              |                    |                     |                 |
|------------------------------|---|--------------|--------------------|---------------------|-----------------|
| <b>APPLICATIONS</b>          | WB  |              |                    |                     |                 |
| <b>SPECIES REACTIVITY</b>    | Human   |              |                    |                     |                 |
| <b>PRESUMED REACTIVITY</b>   | Based on 100% sequence identity, this antibody is predicted to react with Bovine  |              |                    |                     |                 |
| <b>AMOUNT</b>                | 100 µl  |              |                    |                     |                 |
| <b>CONCENTRATION</b>         | 1000 µg/ml  |              |                    |                     |                 |
| <b>STORAGE/SHELF LIFE</b>    | 2 - 8° C / 1 year from date of receipt  |              |                    |                     |                 |
| <b>PHYSICAL STATE</b>        | Liquid  |              |                    |                     |                 |
| <b>BUFFER</b>                | Tris-citrate/phosphate buffer, pH 7 to 8 containing 0.09% Sodium Azide  |              |                    |                     |                 |
| <b>ISOTYPE</b>               | IgG   |              |                    |                     |                 |
| <b>ORIGIN</b>                | USA   |              |                    |                     |                 |
| <b>PRODUCTION PROCEDURES</b> | <p>Antibody was affinity purified using an epitope specific to WDR1 immobilized on solid support.</p> <p>The epitope recognized by A305-471A maps to a region between residue 125 to 175 of human WD repeat-containing protein 1 using the numbering given in entry O75083.4 (GeneID 9948).</p> <p>Antibody concentration was determined by extinction coefficient: absorbance at 280 nm of 1.4 equals 1.0 mg of IgG.</p> |              |                    |                     |                 |
| <b>APPLICATIONS</b>          | <p>Centrifuge tube to remove product from lid. Optimal working dilutions should be determined experimentally by the investigator. Prepare working dilution immediately before use.</p> <table><tr><td>Western Blot</td><td>1:2,000 - 1:10,000</td></tr><tr><td>Immunoprecipitation</td><td>Not recommended</td></tr></table>  | Western Blot | 1:2,000 - 1:10,000 | Immunoprecipitation | Not recommended |
| Western Blot                 | 1:2,000 - 1:10,000  |              |                    |                     |                 |
| Immunoprecipitation          | Not recommended   |              |                    |                     |                 |
| <b>APPLICATION NOTES</b>     | Western blot of lysates performed using standard western blot reagents and 4-20% SDS-PAGE.  |              |                    |                     |                 |
| <b>ADDITIONAL INFO</b>       | <p><a href="https://www.bethyl.com/product/A305-471A">https://www.bethyl.com/product/A305-471A</a></p> <p>Use the link above to view SDS, a current list of citations, and other product specific information.</p>  |              |                    |                     |                 |

This document certifies that this product has met all of the quality control standards defined by Bethyl Laboratories, Inc.  
Eric McIntush, PhD | Chief Scientific Officer Date: June 21, 2019

**Detection of human and mouse WDR1 by western blot.**

*Samples:* Whole cell lysate (15  $\mu$ g) from HeLa, HEK293T, Jurkat, mouse TCMK-1, and mouse NIH 3T3 cells prepared using NETN lysis buffer. *Antibody:* Affinity purified rabbit anti-WDR1 antibody A305-471A (lot A305-471A-1) used for WB at 0.1  $\mu$ g/ml. *Detection:* Chemiluminescence with an exposure time of 30 seconds.