

# TMED2 Antibody

Rabbit Polyclonal

Antigen Affinity Purified

Protein ID Q15363.1

Catalog No. A305-467A

GeneID 10959

Lot No. A305-467A-1

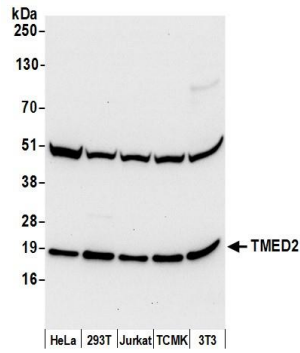


<b>APPLICATIONS</b>	WB				
<b>SPECIES REACTIVITY</b>	Human, Mouse				
<b>PRESUMED REACTIVITY</b>	Based on 100% sequence identity, this antibody is predicted to react with Rat				
<b>AMOUNT</b>	100 µl				
<b>CONCENTRATION</b>	1000 µg/ml				
<b>STORAGE/SHELF LIFE</b>	2 - 8° C / 1 year from date of receipt				
<b>PHYSICAL STATE</b>	Liquid				
<b>BUFFER</b>	Tris-citrate/phosphate buffer, pH 7 to 8 containing 0.09% Sodium Azide				
<b>ISOTYPE</b>	IgG				
<b>ORIGIN</b>	USA				
<b>PRODUCTION PROCEDURES</b>	<p>Antibody was affinity purified using an epitope specific to TMED2 immobilized on solid support.</p> <p>The epitope recognized by A305-467A maps to a region between residue 50 to 100 of human Transmembrane emp24 domain-containing protein 2 using the numbering given in entry Q15363.1 (GeneID 10959).</p> <p>Antibody concentration was determined by extinction coefficient: absorbance at 280 nm of 1.4 equals 1.0 mg of IgG.</p>				
<b>APPLICATIONS</b>	<p>Centrifuge tube to remove product from lid. Optimal working dilutions should be determined experimentally by the investigator. Prepare working dilution immediately before use.</p> <table><tr><td>Western Blot</td><td>1:1,000 - 1:5,000</td></tr><tr><td>Immunoprecipitation</td><td>Not recommended</td></tr></table>	Western Blot	1:1,000 - 1:5,000	Immunoprecipitation	Not recommended
Western Blot	1:1,000 - 1:5,000				
Immunoprecipitation	Not recommended				
<b>APPLICATION NOTES</b>	Western blot of lysates performed using standard western blot reagents and 4-12% SDS-PAGE.				
<b>ADDITIONAL INFO</b>	<p><a href="https://www.bethyl.com/product/A305-467A">https://www.bethyl.com/product/A305-467A</a></p> <p>Use the link above to view SDS, a current list of citations, and other product specific information.</p>				

This document certifies that this product has met all of the quality control standards defined by Bethyl Laboratories, Inc.

Eric McIntush, PhD | Chief Scientific Officer

Date: June 21, 2019

**Detection of human and mouse TMED2 by western blot.**

*Samples:* Whole cell lysate (50  $\mu$ g) from HeLa, HEK293T, Jurkat, mouse TCMK-1, and mouse NIH 3T3 cells prepared using NETN lysis buffer. *Antibody:* Affinity purified rabbit anti-TMED2 antibody A305-467A (lot A305-467A-1) used for WB at 0.4  $\mu$ g/ml. *Detection:* Chemiluminescence with an exposure time of 10 seconds.