

# NISCH Antibody

Rabbit Polyclonal

Antigen Affinity Purified

Protein ID Q9Y2I1.3

Catalog No. A305-446A

GeneID 11188

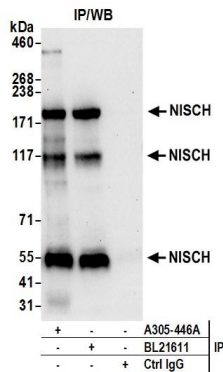
Lot No. A305-446A-1



APPLICATIONS	IP				
SPECIES REACTIVITY	Human				
AMOUNT	100 µl				
CONCENTRATION	1000 µg/ml				
STORAGE/SHELF LIFE	2 – 8° C / 1 year from date of receipt				
PHYSICAL STATE	Liquid				
BUFFER	Tris-citrate/phosphate buffer, pH 7 to 8 containing 0.09% Sodium Azide				
ISOTYPE	IgG				
ORIGIN	USA				
PRODUCTION PROCEDURES	<p>Antibody was affinity purified using an epitope specific to NISCH immobilized on solid support.</p> <p>The epitope recognized by A305-446A maps to a region between residue 1100 to 1150 of human Nischarin using the numbering given in entry Q9Y2I1.3 (GeneID 11188).</p> <p>Antibody concentration was determined by extinction coefficient: absorbance at 280 nm of 1.4 equals 1.0 mg of IgG.</p>				
APPLICATIONS	<p>Centrifuge tube to remove product from lid. Optimal working dilutions should be determined experimentally by the investigator. Prepare working dilution immediately before use.</p> <table><tr><td>Western Blot</td><td>Not recommended. A305-446A has not performed satisfactorily when used for WB of NISCH in crude preparations (e.g. whole cell lysate). This antibody can be used for WB of enriched (e.g. immunoprecipitated) sources of NISCH.</td></tr><tr><td>Immunoprecipitation</td><td>2 – 10 µg/mg lysate</td></tr></table>	Western Blot	Not recommended. A305-446A has not performed satisfactorily when used for WB of NISCH in crude preparations (e.g. whole cell lysate). This antibody can be used for WB of enriched (e.g. immunoprecipitated) sources of NISCH.	Immunoprecipitation	2 – 10 µg/mg lysate
Western Blot	Not recommended. A305-446A has not performed satisfactorily when used for WB of NISCH in crude preparations (e.g. whole cell lysate). This antibody can be used for WB of enriched (e.g. immunoprecipitated) sources of NISCH.				
Immunoprecipitation	2 – 10 µg/mg lysate				
APPLICATION NOTES	Western blot of immunoprecipitates performed using Normal Pig Serum (Cat. No. S100-020), Goat anti-Rabbit Light Chain HRP Conjugate (Cat. No. A120-113P) and 4-8% SDS-PAGE (link to IP-western blot protocol in Additional Info section below).				
ADDITIONAL INFO	<p><a href="https://www.bethyl.com/product/A305-446A">https://www.bethyl.com/product/A305-446A</a></p> <p>Use the link above to view SDS, a current list of citations, and other product specific information.</p> <p>IP-western blot protocol: <a href="https://www.bethyl.com/content/protocol_IP_WB">https://www.bethyl.com/content/protocol_IP_WB</a></p>				

This document certifies that this product has met all of the quality control standards defined by Bethyl Laboratories, Inc.  
Eric McIntush, PhD | Chief Scientific Officer

Date: June 21, 2019



**Detection of human NISCH by western blot of immunoprecipitates.** *Samples:* Whole cell lysate (0.5 or 1.0 mg per IP reaction; 20% of IP loaded) from Jurkat cells prepared using NETN lysis buffer. *Antibodies:* Affinity purified rabbit anti-NISCH antibody A305-446A (lot A305-446A-1) used for IP at 6 µg per reaction. NISCH was also immunoprecipitated by rabbit anti-NISCH antibody BL21611. For blotting immunoprecipitated NISCH, A305-446A was used at 0.4 µg/ml. *Detection:* Chemiluminescence with an exposure time of 30 seconds.