

CAPG Antibody

Rabbit Polyclonal

Antigen Affinity Purified

Protein ID P40121.2

Catalog No. A305-420A

GeneID 822

Lot No. A305-420A-1



APPLICATIONS	WB, IP
SPECIES REACTIVITY	Human
PRESUMED REACTIVITY	Based on 100% sequence identity, this antibody is predicted to react with Mouse, Rat, Chicken and Bovine
AMOUNT	100 µl
CONCENTRATION	1000 µg/ml
STORAGE/SHELF LIFE	2 - 8° C / 1 year from date of receipt
PHYSICAL STATE	Liquid
BUFFER	Tris-citrate/phosphate buffer, pH 7 to 8 containing 0.09% Sodium Azide
ISOTYPE	IgG
ORIGIN	USA
PRODUCTION PROCEDURES	Antibody was affinity purified using an epitope specific to CAPG immobilized on solid support.

The epitope recognized by A305-420A maps to a region between residue 298 to 348 of human Macrophage-capping protein using the numbering given in entry P40121.2 (GeneID 822).

Antibody concentration was determined by extinction coefficient: absorbance at 280 nm of 1.4 equals 1.0 mg of IgG.

APPLICATIONS Centrifuge tube to remove product from lid. Optimal working dilutions should be determined experimentally by the investigator. Prepare working dilution immediately before use.

Western Blot 1:2,000 - 1:10,000

Immunoprecipitation 2 - 10 µg/mg lysate

APPLICATION NOTES Western blot of immunoprecipitates performed using Normal Pig Serum (Cat. No. S100-020), Goat anti-Rabbit Light Chain HRP Conjugate (Cat. No. A120-113P) and 4-20% SDS-PAGE (link to IP-western blot protocol in Additional Info section below).

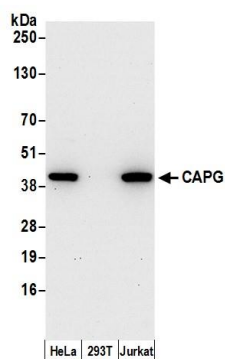
Western blot of lysates performed using standard western blot reagents and 4-20% SDS-PAGE.

ADDITIONAL INFO <https://www.bethyl.com/product/A305-420A>

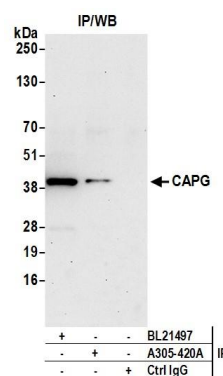
Use the link above to view SDS, a current list of citations, and other product specific information.

IP-western blot protocol: https://www.bethyl.com/content/protocol_IP_WB

This document certifies that this product has met all of the quality control standards defined by Bethyl Laboratories, Inc.
Eric McIntush, PhD | Chief Scientific Officer Date: June 21, 2019



Detection of human CAPG by western blot. *Samples:* Whole cell lysate (15 μ g) from HeLa, HEK293T, and Jurkat cells prepared using NETN lysis buffer. *Antibody:* Affinity purified rabbit anti-CAPG antibody A305-420A (lot A305-420A-1) used for WB at 0.1 μ g/ml. *Detection:* Chemiluminescence with an exposure time of 30 seconds.



Detection of human CAPG by western blot of immunoprecipitates. *Samples:* Whole cell lysate (0.5 or 1.0 mg per IP reaction; 20% of IP loaded) from Jurkat cells prepared using NETN lysis buffer. *Antibodies:* Affinity purified rabbit anti-CAPG antibody A305-420A (lot A305-420A-1) used for IP at 6 μ g per reaction. CAPG was also immunoprecipitated by rabbit anti-CAPG antibody BL21497. For blotting immunoprecipitated CAPG, A305-420A was used at 0.4 μ g/ml. *Detection:* Chemiluminescence with an exposure time of 30 seconds.