

CLCN7 Antibody

Rabbit Polyclonal

Antigen Affinity Purified

Protein ID P51798.2

Catalog No. A305-381A

GeneID 1186

Lot No. A305-381A-1



APPLICATIONS	IP
SPECIES REACTIVITY	Human
PRESUMED REACTIVITY	Based on 100% sequence identity, this antibody is predicted to react with Bovine
AMOUNT	100 µl
CONCENTRATION	1000 µg/ml
STORAGE/SHELF LIFE	2 - 8° C / 1 year from date of receipt
PHYSICAL STATE	Liquid
BUFFER	Tris-citrate/phosphate buffer, pH 7 to 8 containing 0.09% Sodium Azide
ISOTYPE	IgG
ORIGIN	USA
PRODUCTION PROCEDURES	Antibody was affinity purified using an epitope specific to CLCN7 immobilized on solid support.

The epitope recognized by A305-381A maps to a region between residue 50 to 100 of human H using the numbering given in entry P51798.2 (GeneID 1186).

Antibody concentration was determined by extinction coefficient: absorbance at 280 nm of 1.4 equals 1.0 mg of IgG.

APPLICATIONS Centrifuge tube to remove product from lid. Optimal working dilutions should be determined experimentally by the investigator. Prepare working dilution immediately before use.

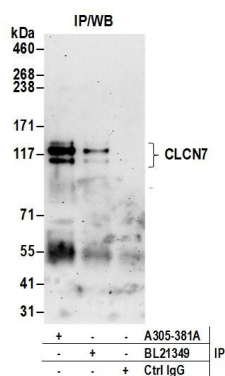
Western Blot Not recommended. A305-381A has not performed satisfactorily when used for WB of CLCN7 in crude preparations (e.g. whole cell lysate). This antibody can be used for WB of enriched (e.g. immunoprecipitated) sources of CLCN7.

Immunoprecipitation 2 - 10 µg/mg lysate

APPLICATION NOTES Western blot of immunoprecipitates performed using Normal Pig Serum (Cat. No. S100-020), Goat anti-Rabbit Light Chain HRP Conjugate (Cat. No. A120-113P) and 4-8% SDS-PAGE (link to IP-western blot protocol in Additional Info section below).

ADDITIONAL INFO <https://www.bethyl.com/product/A305-381A>
Use the link above to view SDS, a current list of citations, and other product specific information.
IP-western blot protocol: https://www.bethyl.com/content/protocol_IP_WB

This document certifies that this product has met all of the quality control standards defined by Bethyl Laboratories, Inc.
Eric McIntush, PhD | Chief Scientific Officer Date: June 21, 2019



Detection of human CLCN7 by western blot of immunoprecipitates. *Samples:* Whole cell lysate (0.5 or 1.0 mg per IP reaction; 20% of IP loaded) from Jurkat cells prepared using NETN lysis buffer. *Antibodies:* Affinity purified rabbit anti-CLCN7 antibody A305-381A (lot A305-381A-1) used for IP at 6 µg per reaction. CLCN7 was also immunoprecipitated by rabbit anti-CLCN7 antibody BL21349. For blotting immunoprecipitated CLCN7, A305-381A was used at 0.4 µg/ml. *Detection:* Chemiluminescence with an exposure time of 3 minutes.