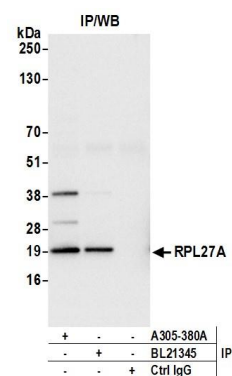


#### Detection of human and mouse RPL27A by western blot.

**Samples:** Whole cell lysate (15 µg) from HeLa, HEK293T, Jurkat, mouse TCMK-1, and mouse NIH 3T3 cells prepared using NETN lysis buffer. **Antibody:** Affinity purified rabbit anti-RPL27A antibody A305-380A (lot A305-380A-1) used for WB at 0.1 µg/ml. **Detection:** Chemiluminescence with an exposure time of 10 seconds.



#### Detection of human RPL27A by western blot of immunoprecipitates.

**Samples:** Whole cell lysate (0.5 or 1.0 mg per IP reaction; 20% of IP loaded) from HeLa cells prepared using NETN lysis buffer. **Antibodies:** Affinity purified rabbit anti-RPL27A antibody A305-380A (lot A305-380A-1) used for IP at 6 µg per reaction. RPL27A was also immunoprecipitated by rabbit anti-RPL27A antibody BL21345. For blotting immunoprecipitated RPL27A, A305-380A was used at 1 µg/ml. **Detection:** Chemiluminescence with an exposure time of 1 second.