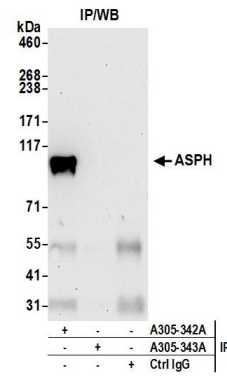


**Detection of human ASPH by western blot.** *Samples:* Whole cell lysate (50 µg) from HeLa, HEK293T, and Jurkat cells prepared using NETN lysis buffer. *Antibody:* Affinity purified rabbit anti-ASPH antibody A305-342A (lot A305-342A-1) used for WB at 0.1 µg/ml. *Detection:* Chemiluminescence with an exposure time of 10 seconds.



**Detection of human ASPH by western blot of immunoprecipitates.** *Samples:* Whole cell lysate (0.5 or 1.0 mg per IP reaction; 20% of IP loaded) from HeLa cells prepared using NETN lysis buffer. *Antibodies:* Affinity purified rabbit anti-ASPH antibody A305-342A (lot A305-342A-1) used for IP at 6 µg per reaction. ASPH was also immunoprecipitated by rabbit anti-ASPH antibody A305-343A. For blotting immunoprecipitated ASPH, A305-343A was used at 0.4 µg/ml. *Detection:* Chemiluminescence with an exposure time of 30 seconds.