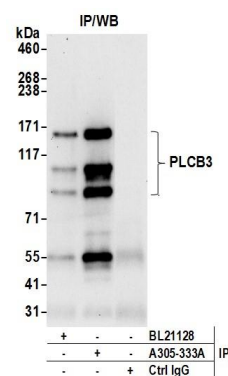


Detection of human PLCB3 by western blot. *Samples:* Whole cell lysate (15 µg) from HeLa, HEK293T, and Jurkat cells prepared using NETN lysis buffer. *Antibody:* Affinity purified rabbit anti-PLCB3 antibody A305-333A (lot A305-333A-1) used for WB at 0.1 µg/ml. *Detection:* Chemiluminescence with an exposure time of 3 minutes.



Detection of human PLCB3 by western blot of immunoprecipitates. *Samples:* Whole cell lysate (0.5 or 1.0 mg per IP reaction; 20% of IP loaded) from HeLa cells prepared using NETN lysis buffer. *Antibodies:* Affinity purified rabbit anti-PLCB3 antibody A305-333A (lot A305-333A-1) used for IP at 6 µg per reaction. PLCB3 was also immunoprecipitated by rabbit anti-PLCB3 antibody BL21128. For blotting immunoprecipitated PLCB3, A305-333A was used at 1 µg/ml. *Detection:* Chemiluminescence with an exposure time of 30 seconds.