

RAB1A Antibody

Rabbit Polyclonal

Antigen Affinity Purified

Protein ID P62820.3

Catalog No. A305-328A

GeneID 5861

Lot No. A305-328A-1



APPLICATIONS	IP
SPECIES REACTIVITY	Human
PRESUMED REACTIVITY	Based on 100% sequence identity, this antibody is predicted to react with Mouse, Rat, Dog and Pig
AMOUNT	100 µl
CONCENTRATION	1000 µg/ml
STORAGE/SHELF LIFE	2 - 8° C / 1 year from date of receipt
PHYSICAL STATE	Liquid
BUFFER	Tris-citrate/phosphate buffer, pH 7 to 8 containing 0.09% Sodium Azide
ISOTYPE	IgG
ORIGIN	USA
PRODUCTION PROCEDURES	Antibody was affinity purified using an epitope specific to RAB1A immobilized on solid support.

The epitope recognized by A305-328A maps to a region between residue 155 to 205 of human Ras-related protein Rab-1A using the numbering given in entry P62820.3 (GeneID 5861).

Antibody concentration was determined by extinction coefficient: absorbance at 280 nm of 1.4 equals 1.0 mg of IgG.

APPLICATIONS Centrifuge tube to remove product from lid. Optimal working dilutions should be determined experimentally by the investigator. Prepare working dilution immediately before use.

Western Blot Not recommended. A305-328A has not performed satisfactorily when used for WB of RAB1A in crude preparations (e.g. whole cell lysate). This antibody can be used for WB of enriched (e.g. immunoprecipitated) sources of RAB1A.

Immunoprecipitation 2 - 10 µg/mg lysate

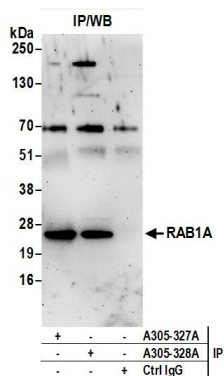
APPLICATION NOTES Western blot of immunoprecipitates performed using Normal Pig Serum (Cat. No. S100-020), Goat anti-Rabbit Light Chain HRP Conjugate (Cat. No. A120-113P) and 4-20% SDS-PAGE (link to IP-western blot protocol in Additional Info section below).

ADDITIONAL INFO <https://www.bethyl.com/product/A305-328A>

Use the link above to view SDS, a current list of citations, and other product specific information.

IP-western blot protocol: https://www.bethyl.com/content/protocol_IP_WB

This document certifies that this product has met all of the quality control standards defined by Bethyl Laboratories, Inc.
Eric McIntush, PhD | Chief Scientific Officer Date: June 21, 2019



Detection of human RAB1A by western blot of immunoprecipitates. *Samples:* Whole cell lysate (0.5 or 1.0 mg per IP reaction; 20% of IP loaded) from 293T cells prepared using NETN lysis buffer. *Antibodies:* Affinity purified rabbit anti-RAB1A antibody A305-328A (lot A305-328A-1) used for IP at 6 µg per reaction. RAB1A was also immunoprecipitated by rabbit anti-RAB1A antibody A305-327A. For blotting immunoprecipitated RAB1A, A305-328A was used at 1 µg/ml. *Detection:* Chemiluminescence with an exposure time of 3 minutes.