

Occludin Antibody

Rabbit Polyclonal

Antigen Affinity Purified

Catalog No. A305-297A

Lot No. A305-297A-1

Protein ID Q16625.1

GeneID 100506658



APPLICATIONS	WB, IP
SPECIES REACTIVITY	Human
PRESUMED REACTIVITY	Based on 100% sequence identity, this antibody is predicted to react with Dog and Orangutan
AMOUNT	100 µl
CONCENTRATION	1000 µg/ml
STORAGE/SHELF LIFE	2 - 8° C / 1 year from date of receipt
PHYSICAL STATE	Liquid
BUFFER	Tris-citrate/phosphate buffer, pH 7 to 8 containing 0.09% Sodium Azide
ISOTYPE	IgG
ORIGIN	USA
PRODUCTION PROCEDURES	Antibody was affinity purified using an epitope specific to OCLN immobilized on solid support.

The epitope recognized by A305-297A maps to a region between residue 472 to 522 of human Occludin using the numbering given in entry Q16625.1 (GeneID 100506658).

Antibody concentration was determined by extinction coefficient: absorbance at 280 nm of 1.4 equals 1.0 mg of IgG.

APPLICATIONS Centrifuge tube to remove product from lid. Optimal working dilutions should be determined experimentally by the investigator. Prepare working dilution immediately before use.

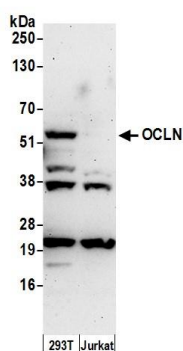
Western Blot 1:1,000 - 1:5,000

Immunoprecipitation 2 - 10 µg/mg lysate

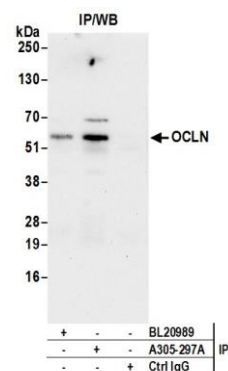
ADDITIONAL INFO <https://www.bethyl.com/product/A305-297A>

Use the link above to view SDS, a current list of citations, and other product specific information. IP-western blot protocol: https://www.bethyl.com/content/protocol_IP_WB

This document certifies that this product has met all of the quality control standards defined by Bethyl Laboratories, Inc.
Eric McIntush, PhD | Chief Scientific Officer Date: September 30, 2020



Detection of human Occludin by western blot. *Samples:* Whole cell lysate (50 μ g) from 293T and Jurkat cells prepared using NETN lysis buffer. ***Antibody:*** Affinity purified rabbit anti-Occludin antibody A305-297A (lot A305-297A-1) used for WB at 0.4 μ g/ml. ***Detection:*** Chemiluminescence with an exposure time of 3 minutes.



Detection of human Occludin by western blot of immunoprecipitates. *Samples:* Whole cell lysate (0.5 or 1.0 mg per IP reaction; 20% of IP loaded) from 293T cells prepared using NETN lysis buffer. ***Antibodies:*** Affinity purified rabbit anti-Occludin antibody A305-297A (lot A305-297A-1) used for IP at 6 μ g per reaction. Occludin was also immunoprecipitated by rabbit anti-Occludin antibody BL20989. For blotting immunoprecipitated Occludin, A305-297A was used at 1 μ g/ml. ***Detection:*** Chemiluminescence with an exposure time of 30 seconds.