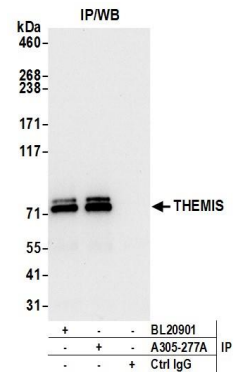


**Detection of human THEMIS by western blot.** *Samples:* Whole cell lysate (50 µg) from HeLa, HEK293T, and Jurkat cells prepared using NETN lysis buffer. *Antibody:* Affinity purified rabbit anti-THEMIS antibody A305-277A (lot A305-277A-1) used for WB at 0.1 µg/ml. *Detection:* Chemiluminescence with an exposure time of 10 seconds.



**Detection of human THEMIS by western blot of immunoprecipitates.** *Samples:* Whole cell lysate (0.5 or 1.0 mg per IP reaction; 20% of IP loaded) from Jurkat cells prepared using NETN lysis buffer. *Antibodies:* Affinity purified rabbit anti-THEMIS antibody A305-277A (lot A305-277A-1) used for IP at 6 µg per reaction. THEMIS was also immunoprecipitated by rabbit anti-THEMIS antibody BL20901. For blotting immunoprecipitated THEMIS, A305-277A was used at 1 µg/ml. *Detection:* Chemiluminescence with an exposure time of 10 seconds.