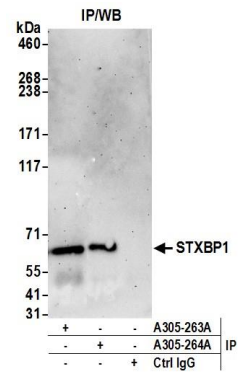


Detection of human and mouse STXBP1 by western blot.
Samples: Whole cell lysate (50 µg) from HeLa, HEK293T, Jurkat, mouse TCMK-1, and mouse NIH 3T3 cells prepared using NETN lysis buffer. *Antibody:* Affinity purified rabbit anti-STXBP1 antibody A305-263A (lot A305-263A-1) used for WB at 0.1 µg/ml. *Detection:* Chemiluminescence with an exposure time of 30 seconds.



Detection of human STXBP1 by western blot of immunoprecipitates.
Samples: Whole cell lysate (0.5 or 1.0 mg per IP reaction; 20% of IP loaded) from HeLa cells prepared using NETN lysis buffer. *Antibodies:* Affinity purified rabbit anti-STXBP1 antibody A305-263A (lot A305-263A-1) used for IP at 6 µg per reaction. STXBP1 was also immunoprecipitated by rabbit anti-STXBP1 antibody A305-264A. For blotting immunoprecipitated STXBP1, A305-263A was used at 1 µg/ml. *Detection:* Chemiluminescence with an exposure time of 3 minutes.