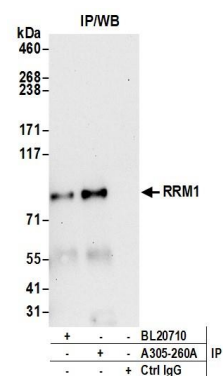


Detection of human and mouse RRM1 by western blot.

Samples: Whole cell lysate (15 µg) from HeLa, HEK293T, Jurkat, mouse TCMK-1, and mouse NIH 3T3 cells prepared using NETN lysis buffer. **Antibody:** Affinity purified rabbit anti-RRM1 antibody A305-260A (lot A305-260A-1) used for WB at 0.1 µg/ml. **Detection:** Chemiluminescence with an exposure time of 30 seconds.



Detection of human RRM1 by western blot of immunoprecipitates.

Samples: Whole cell lysate (0.5 or 1.0 mg per IP reaction; 20% of IP loaded) from 293T cells prepared using NETN lysis buffer. **Antibodies:** Affinity purified rabbit anti-RRM1 antibody A305-260A (lot A305-260A-1) used for IP at 6 µg per reaction. RRM1 was also immunoprecipitated by rabbit anti-RRM1 antibody BL20710. For blotting immunoprecipitated RRM1, A305-260A was used at 0.4 µg/ml. **Detection:** Chemiluminescence with an exposure time of 30 seconds.