

FSCN1 Antibody

Rabbit Polyclonal

Antigen Affinity Purified

Protein ID Q16658.3

Catalog No. A305-240A

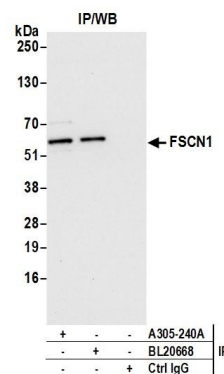
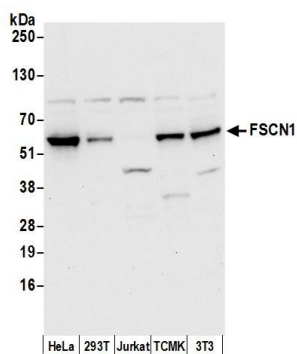
GeneID 6624

Lot No. A305-240A-1



APPLICATIONS	WB, IP
SPECIES REACTIVITY	Human, Mouse
PRESUMED REACTIVITY	Based on 100% sequence identity, this antibody is predicted to react with Rat
AMOUNT	100 µl
CONCENTRATION	1000 µg/ml
STORAGE/SHELF LIFE	2 - 8° C / 1 year from date of receipt
PHYSICAL STATE	Liquid
BUFFER	Tris-citrate/phosphate buffer, pH 7 to 8 containing 0.09% Sodium Azide
ISOTYPE	IgG
ORIGIN	USA
PRODUCTION PROCEDURES	<p>Antibody was affinity purified using an epitope specific to FSCN1 immobilized on solid support.</p> <p>The epitope recognized by A305-240A maps to a region between residue 25 to 75 of human Fascin using the numbering given in entry Q16658.3 (GeneID 6624).</p> <p>Antibody concentration was determined by extinction coefficient: absorbance at 280 nm of 1.4 equals 1.0 mg of IgG.</p>
APPLICATIONS	<p>Centrifuge tube to remove product from lid. Optimal working dilutions should be determined experimentally by the investigator. Prepare working dilution immediately before use.</p> <p>Western Blot 1:1,000 - 1:5,000</p> <p>Immunoprecipitation 2 - 10 µg/mg lysate</p>
APPLICATION NOTES	<p>Western blot of immunoprecipitates performed using Normal Pig Serum (Cat. No. S100-020), Goat anti-Rabbit Light Chain HRP Conjugate (Cat. No. A120-113P) and 4-20% SDS-PAGE (link to IP-western blot protocol in Additional Info section below).</p> <p>Western blot of lysates performed using standard western blot reagents and 4-20% SDS-PAGE.</p>
ADDITIONAL INFO	<p>https://www.bethyl.com/product/A305-240A</p> <p>Use the link above to view SDS, a current list of citations, and other product specific information.</p> <p>IP-western blot protocol: https://www.bethyl.com/content/protocol_IP_WB</p>

This document certifies that this product has met all of the quality control standards defined by Bethyl Laboratories, Inc.
Eric McIntush, PhD | Chief Scientific Officer Date: June 21, 2019



Detection of human and mouse FSCN1 by western blot.
Samples: Whole cell lysate (50 µg) from HeLa, 293T, Jurkat, mouse TCMK-1, and mouse NIH3T3 cells prepared using NETN lysis buffer. *Antibody:* Affinity purified rabbit anti-FSCN1 antibody A305-240A (lot A305-240A-1) used for WB at 0.4 µg/ml. *Detection:* Chemiluminescence with an exposure time of 10 seconds.

Detection of Human FSCN1 by western blot of immunoprecipitates. *Samples:* Whole cell lysate (0.5 or 1.0 mg per IP reaction; 20% of IP loaded) from 293T cells prepared using NETN lysis buffer. *Antibodies:* Affinity purified rabbit anti-FSCN1 antibody A305-240A (lot A305-240A-1) used for IP at 6 µg per reaction. FSCN1 was also immunoprecipitated by rabbit anti-FSCN1 antibody BL20668. For blotting immunoprecipitated FSCN1, A305-240A was used at 1 µg/ml. *Detection:* Chemiluminescence with an exposure time of 10 seconds.