

# ARF6/ADP Ribosylation Factor 6 Antibody

Rabbit Polyclonal

Antigen Affinity Purified Protein ID P62330.2  
Catalog No. A305-238A GeneID 382  
Lot No. A305-238A-1



**APPLICATIONS** WB, IP  
**SPECIES REACTIVITY** Human, Mouse  
**PRESUMED REACTIVITY** Based on 100% sequence identity, this antibody is predicted to react with Rat, D. melanogaster, X. laevis, Chicken and Pig  
**AMOUNT** 100 µl  
**CONCENTRATION** 1000 µg/ml  
**STORAGE/SHELF LIFE** 2 - 8° C / 1 year from date of receipt  
**PHYSICAL STATE** Liquid  
**BUFFER** Tris-citrate/phosphate buffer, pH 7 to 8 containing 0.09% Sodium Azide  
**ISOTYPE** IgG  
**ORIGIN** USA  
**PRODUCTION PROCEDURES** Antibody was affinity purified using an epitope specific to ARF6/ADP Ribosylation Factor 6 immobilized on solid support.

The epitope recognized by A305-238A maps to a region between residue 125 to 175 of human ADP-ribosylation factor 6 using the numbering given in entry P62330.2 (GeneID 382).

Antibody concentration was determined by extinction coefficient: absorbance at 280 nm of 1.4 equals 1.0 mg of IgG.

**APPLICATIONS** Centrifuge tube to remove product from lid. Optimal working dilutions should be determined experimentally by the investigator. Prepare working dilution immediately before use.

Western Blot 1:2,000 - 1:10,000

Immunoprecipitation 2 - 10 µg/mg lysate

**APPLICATION NOTES** Western blot of immunoprecipitates performed using Normal Pig Serum (Cat. No. S100-020), Goat anti-Rabbit Light Chain HRP Conjugate (Cat. No. A120-113P) and 4-12% SDS-PAGE (link to IP-western blot protocol in Additional Info section below).

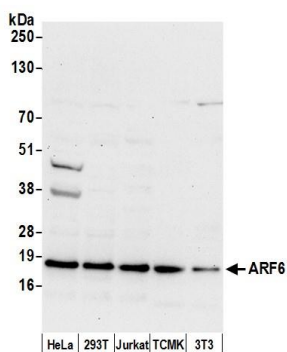
Western blot of lysates performed using standard western blot reagents and 4-12% SDS-PAGE.

**ADDITIONAL INFO** <https://www.bethyl.com/product/A305-238A>

Use the link above to view SDS, a current list of citations, and other product specific information.

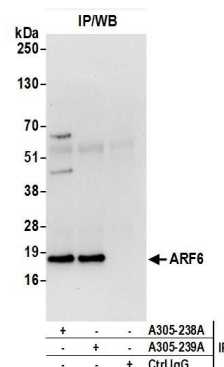
IP-western blot protocol: [https://www.bethyl.com/content/protocol\\_IP\\_WB](https://www.bethyl.com/content/protocol_IP_WB)

This document certifies that this product has met all of the quality control standards defined by Bethyl Laboratories, Inc.  
Eric McIntush, PhD | Chief Scientific Officer Date: June 21, 2019



#### Detection of human and mouse ARF6 by western blot.

**Samples:** Whole cell lysate (50 µg) from HeLa, HEK293T, Jurkat, mouse TCMK-1, and mouse NIH 3T3 cells prepared using NETN lysis buffer. **Antibody:** Affinity purified rabbit anti-ARF6 antibody A305-238A (lot A305-238A-1) used for WB at 0.1 µg/ml. **Detection:** Chemiluminescence with an exposure time of 30 seconds.



#### Detection of human ARF6 by western blot of immunoprecipitates.

**Samples:** Whole cell lysate (0.5 or 1.0 mg per IP reaction; 20% of IP loaded) from 293T cells prepared using NETN lysis buffer. **Antibodies:** Affinity purified rabbit anti-ARF6 antibody A305-238A (lot A305-238A-1) used for IP at 6 µg per reaction. ARF6 was also immunoprecipitated by rabbit anti-ARF6 antibody A305-239A. For blotting immunoprecipitated ARF6, A305-238A was used at 1 µg/ml. **Detection:** Chemiluminescence with an exposure time of 10 seconds.