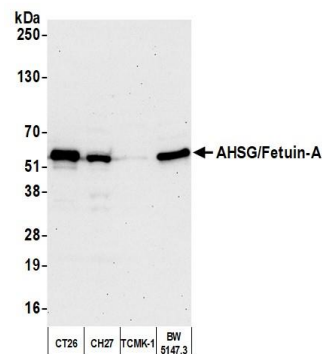


**Detection of human AHSG/Fetuin-A by western blot.**  
*Samples:* Whole cell lysate (10 µg) from Jurkat (50 µg), Hep-G2, and RKO cells prepared using NETN lysis buffer.  
*Antibody:* Affinity purified rabbit anti-AHSG/Fetuin-A antibody (A305-236A lot 2) used for WB at 0.1 µg/ml.  
*Detection:* Chemiluminescence with an exposure time of 75 seconds.



**Detection of mouse AHSG/Fetuin-A by western blot.**  
*Samples:* Whole cell lysate (10 µg) from CT26, CH27, TCMK-1, and BW5147.3 cells prepared using NETN lysis buffer.  
*Antibody:* Affinity purified rabbit anti-AHSG/Fetuin-A antibody (A305-236A lot 2) used for WB at 0.4 µg/ml.  
*Detection:* Chemiluminescence with an exposure time of 30 seconds.