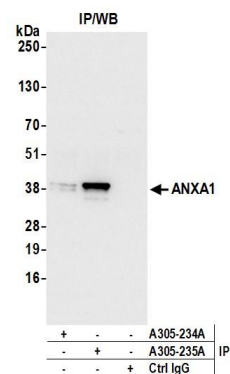
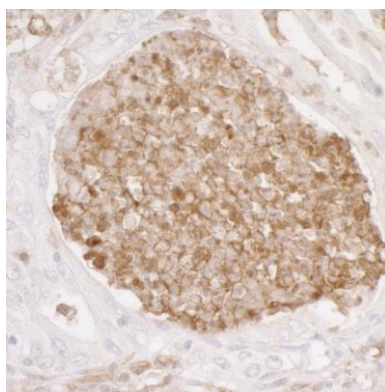


Detection of human and mouse ANXA1 by western blot.
Samples: Whole cell lysate (50 µg) from HeLa, HEK293T, Jurkat, mouse TCMK-1, and mouse NIH 3T3 cells prepared using NETN lysis buffer. *Antibody:* Affinity purified rabbit anti-ANXA1 antibody A305-235A (lot A305-235A-1) used for WB at 0.1 µg/ml. *Detection:* Chemiluminescence with an exposure time of 3 seconds.



Detection of human ANXA1 by western blot of immunoprecipitates. *Samples:* Whole cell lysate (1.0 mg per IP reaction; 20% of IP loaded) from HeLa cells prepared using NETN lysis buffer. *Antibodies:* Affinity purified rabbit anti-ANXA1 antibody A305-235A (lot A305-235A-1) used for IP at 6 µg per reaction. ANXA1 was also immunoprecipitated by rabbit anti-ANXA1 antibody A305-234A. For blotting immunoprecipitated ANXA1, A305-235A was used at 0.4 µg/ml. *Detection:* Chemiluminescence with an exposure time of 3 seconds.



Detection of human ANXA1 by immunohistochemistry.
Sample: FFPE section of human lung carcinoma. *Antibody:* Affinity purified rabbit anti-ANXA1 (Cat. No. A305-235A Lot1) used at a dilution of 1:5,000 (0.2 µg/ml). *Detection:* DAB