

ANXA1 /Annexin A1 Antibody

Rabbit Polyclonal

Antigen Affinity Purified Protein ID P04083.2

Catalog No. A305-234A GeneID 301

Lot No. A305-234A-1



APPLICATIONS	WB, IP, IHC
SPECIES REACTIVITY	Human, Mouse
PRESUMED REACTIVITY	Based on 100% sequence identity, this antibody is predicted to react with Bovine, Horse, Orangutan and Chimpanzee
AMOUNT	100 µl
CONCENTRATION	1000 µg/ml
STORAGE/SHELF LIFE	2 - 8° C / 1 year from date of receipt
PHYSICAL STATE	Liquid
BUFFER	Tris-citrate/phosphate buffer, pH 7 to 8 containing 0.09% Sodium Azide
ISOTYPE	IgG
ORIGIN	USA
PRODUCTION PROCEDURES	Antibody was affinity purified using an epitope specific to ANXA1 /Annexin A1 immobilized on solid support.

The epitope recognized by A305-234A maps to a region between residue 1 to 50 of human Annexin A1 using the numbering given in entry P04083.2 (GeneID 301).

Antibody concentration was determined by extinction coefficient: absorbance at 280 nm of 1.4 equals 1.0 mg of IgG.

APPLICATIONS Centrifuge tube to remove product from lid. Optimal working dilutions should be determined experimentally by the investigator. Prepare working dilution immediately before use.

Western Blot 1:2,000 - 1:10,000

Immunoprecipitation 2 - 10 µg/mg lysate

Immunohistochemistry 1:2,000 - 1:10,000. Epitope retrieval with citrate buffer pH 6.0 is recommended for FFPE tissue sections.

APPLICATION NOTES Western blot of immunoprecipitates performed using Normal Pig Serum (Cat. No. S100-020), Goat anti-Rabbit Light Chain HRP Conjugate (Cat. No. A120-113P) and 4-20% SDS-PAGE (link to IP-western blot protocol in Additional Info section below).

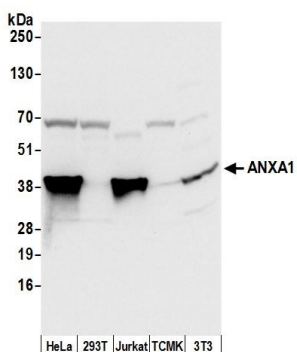
Western blot of lysates performed using standard western blot reagents and 4-20% SDS-PAGE.

ADDITIONAL INFO <https://www.bethyl.com/product/A305-234A>

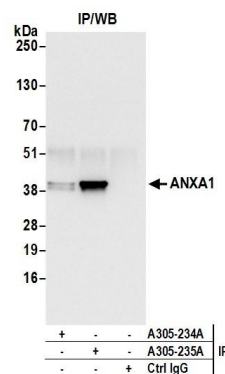
Use the link above to view SDS, a current list of citations, and other product specific information.

IP-western blot protocol: https://www.bethyl.com/content/protocol_IP_WB

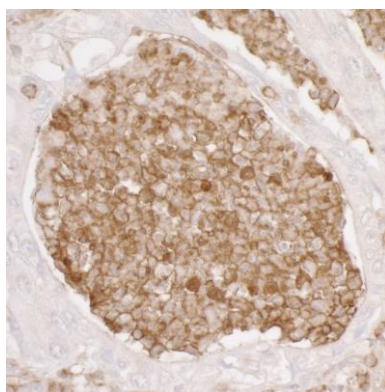
This document certifies that this product has met all of the quality control standards defined by Bethyl Laboratories, Inc.
Eric McIntush, PhD | Chief Scientific Officer Date: June 21, 2019



Detection of human and mouse ANXA1 by western blot.
Samples: Whole cell lysate (50 µg) from HeLa, HEK293T, Jurkat, mouse TCMK-1, and mouse NIH 3T3 cells prepared using NETN lysis buffer. *Antibody:* Affinity purified rabbit anti-ANXA1 antibody A305-234A (lot A305-234A-1) used for WB at 0.1 µg/ml. *Detection:* Chemiluminescence with an exposure time of 3 seconds.



Detection of human ANXA1 by western blot of immunoprecipitates. *Samples:* Whole cell lysate (0.5 or 1.0 mg per IP reaction; 20% of IP loaded) from 293T cells prepared using NETN lysis buffer. *Antibodies:* Affinity purified rabbit anti-ANXA1 antibody A305-234A (lot A305-234A-1) used for IP at 6 µg per reaction. ANXA1 was also immunoprecipitated by rabbit anti-ANXA1 antibody A305-235A. For blotting immunoprecipitated ANXA1, A305-234A was used at 0.4 µg/ml. *Detection:* Chemiluminescence with an exposure time of 3 seconds.



Detection of human ANXA1 by immunohistochemistry.
Sample: FFPE section of human lung carcinoma. *Antibody:* Affinity purified rabbit anti-ANXA1 (Cat. No. A305-234A Lot1) used at a dilution of 1:5,000 (0.2 µg/ml). *Detection:* DAB