

TBC1D1 Antibody

Rabbit Polyclonal

Antigen Affinity Purified

Protein ID Q86TI0.2

Catalog No. A305-226A

GeneID 23216

Lot No. A305-226A-1



APPLICATIONS	WB, IP
SPECIES REACTIVITY	Human
AMOUNT	100 µl
CONCENTRATION	1000 µg/ml
STORAGE/SHELF LIFE	2 – 8° C / 1 year from date of receipt
PHYSICAL STATE	Liquid
BUFFER	Tris-citrate/phosphate buffer, pH 7 to 8 containing 0.09% Sodium Azide
ISOTYPE	IgG
ORIGIN	USA
PRODUCTION PROCEDURES	Antibody was affinity purified using an epitope specific to TBC1D1 immobilized on solid support.

The epitope recognized by A305-226A maps to a region between residue 1118 to 1168 of human TBC1 domain family member 1 using the numbering given in entry Q86TI0.2 (GeneID 23216).

Antibody concentration was determined by extinction coefficient: absorbance at 280 nm of 1.4 equals 1.0 mg of IgG.

APPLICATIONS Centrifuge tube to remove product from lid. Optimal working dilutions should be determined experimentally by the investigator. Prepare working dilution immediately before use.

Western Blot 1:500 – 1:2,500

Immunoprecipitation 2 – 10 µg/mg lysate

APPLICATION NOTES Western blot of immunoprecipitates performed using Normal Pig Serum (Cat. No. S100-020), Goat anti-Rabbit Light Chain HRP Conjugate (Cat. No. A120-113P) and 4-8% SDS-PAGE (link to IP-western blot protocol in Additional Info section below).

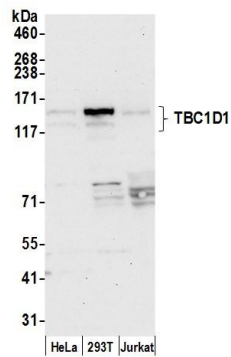
Western blot of lysates performed using standard western blot reagents and 4-8% SDS-PAGE.

ADDITIONAL INFO <https://www.bethyl.com/product/A305-226A>

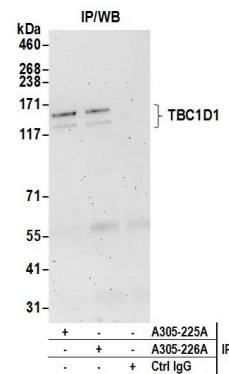
Use the link above to view SDS, a current list of citations, and other product specific information.

IP-western blot protocol: https://www.bethyl.com/content/protocol_IP_WB

This document certifies that this product has met all of the quality control standards defined by Bethyl Laboratories, Inc.
Eric McIntush, PhD | Chief Scientific Officer Date: June 21, 2019



Detection of human TBC1D1 by western blot. *Samples:* Whole cell lysate (50 μ g) from HeLa, HEK293T, and Jurkat cells prepared using NETN lysis buffer. *Antibody:* Affinity purified rabbit anti-TBC1D1 antibody A305-226A (lot A305-226A-1) used for WB at 1 μ g/ml. *Detection:* Chemiluminescence with an exposure time of 30 seconds.



Detection of human TBC1D1 by western blot of immunoprecipitates. *Samples:* Whole cell lysate (0.5 or 1.0 mg per IP reaction; 20% of IP loaded) from 293T cells prepared using NETN lysis buffer. *Antibodies:* Affinity purified rabbit anti-TBC1D1 antibody A305-226A (lot A305-226A-1) used for IP at 6 μ g per reaction. TBC1D1 was also immunoprecipitated by rabbit anti-TBC1D1 antibody A305-225A. For blotting immunoprecipitated TBC1D1, A305-226A was used at 1 μ g/ml. *Detection:* Chemiluminescence with an exposure time of 3 minutes.