

PTRH2/BIT1 Antibody

Rabbit Polyclonal

Antigen Affinity Purified

Protein ID Q9Y3E5.1

Catalog No. A305-224A

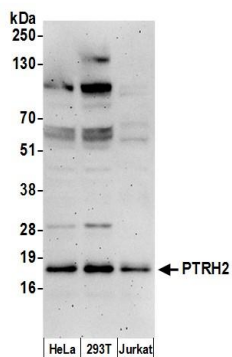
GeneID 51651

Lot No. A305-224A-1



| | |
|------------------------------|---|
| APPLICATIONS | WB |
| SPECIES REACTIVITY | Human |
| AMOUNT | 100 µl |
| CONCENTRATION | 1000 µg/ml |
| STORAGE/SHELF LIFE | 2 - 8° C / 1 year from date of receipt |
| PHYSICAL STATE | Liquid |
| BUFFER | Tris-citrate/phosphate buffer, pH 7 to 8 containing 0.09% Sodium Azide |
| ISOTYPE | IgG |
| ORIGIN | USA |
| PRODUCTION PROCEDURES | Antibody was affinity purified using an epitope specific to PTRH2/BIT1 immobilized on solid support. The epitope recognized by A305-224A maps to a region between residue 129 to 179 of human Peptidyl-tRNA hydrolase 2, mitochondrial using the numbering given in entry Q9Y3E5.1 (GeneID 51651). Antibody concentration was determined by extinction coefficient: absorbance at 280 nm of 1.4 equals 1.0 mg of IgG. |
| APPLICATIONS | Centrifuge tube to remove product from lid. Optimal working dilutions should be determined experimentally by the investigator. Prepare working dilution immediately before use. Western Blot 1:2,000 - 1:10,000 Immunoprecipitation Not recommended |
| APPLICATION NOTES | Western blot of lysates performed using standard western blot reagents and 4-12% SDS-PAGE. |
| ADDITIONAL INFO | https://www.bethyl.com/product/A305-224A Use the link above to view SDS, a current list of citations, and other product specific information. |

This document certifies that this product has met all of the quality control standards defined by Bethyl Laboratories, Inc.
Eric McIntush, PhD | Chief Scientific Officer Date: June 21, 2019



Detection of human PTRH2 by western blot. *Samples:* Whole cell lysate (50 μ g) from HeLa, HEK293T, and Jurkat cells prepared using NETN lysis buffer. *Antibody:* Affinity purified rabbit anti-PTRH2 antibody A305-224A (lot A305-224A-1) used for WB at 0.1 μ g/ml. *Detection:* Chemiluminescence with an exposure time of 3 minutes.