

LTBR/Lymphotoxin-beta Receptor Antibody

Rabbit Polyclonal

Antigen Affinity Purified Protein ID P36941.1

Catalog No. A305-189A-T GeneID 4055

Lot No. A305-189A-T-1



APPLICATIONS	WB, IP
SPECIES REACTIVITY	Human
AMOUNT	20 µl (2 blots)
CONCENTRATION	400 µg/ml
STORAGE/SHELF LIFE	2 - 8° C / 1 year from date of receipt
PHYSICAL STATE	Liquid
BUFFER	Tris-buffered Saline containing 0.1% BSA and 0.09% Sodium Azide
ISOTYPE	IgG
ORIGIN	USA
PRODUCTION PROCEDURES	Antibody was affinity purified using an epitope specific to LTBR/Lymphotoxin-beta Receptor immobilized on solid support.

The epitope recognized by A305-189A-T maps to a region between residue 385 to 435 of human Tumor necrosis factor receptor superfamily member 3 using the numbering given in entry P36941.1 (GeneID 4055).

APPLICATIONS Centrifuge tube to remove product from lid. Optimal working dilutions should be determined experimentally by the investigator. Prepare working dilution immediately before use.

Western Blot 1:1000

Immunoprecipitation The antibody contained within A305-189A-T has been qualified for use in immunoprecipitation; however, we recommend using the alternative formulation of this antibody found as product A305-189A.

APPLICATION NOTES Western blot of immunoprecipitates performed using Normal Pig Serum (Cat. No. S100-020), Goat anti-Rabbit Light Chain HRP Conjugate (Cat. No. A120-113P) and 4-20% SDS-PAGE (link to IP-western blot protocol in Additional Info section below).

Western blot of lysates performed using standard western blot reagents and 4-20% SDS-PAGE.

ADDITIONAL INFO <https://www.bethyl.com/product/A305-189A-T>

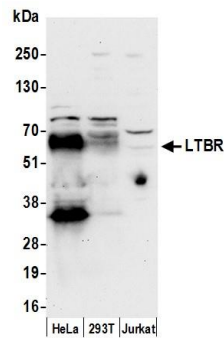
Use the link above to view SDS, a current list of citations, and other product specific information.

IP-western blot protocol: https://www.bethyl.com/content/protocol_IP_WB

This document certifies that this product has met all of the quality control standards defined by Bethyl Laboratories, Inc.

Eric McIntush, PhD | Chief Scientific Officer

Date: June 21, 2019



Detection of human LTBR by western blot. *Samples:* Whole cell lysate (50 μ g) from HeLa, HEK293T, and Jurkat cells prepared using NETN lysis buffer. *Antibody:* Affinity purified rabbit anti-LTBR antibody A305-189A-T (lot A305-189A-T-1) used for WB at 1:1000. *Detection:* Chemiluminescence with an exposure time of 30 seconds.