

CELSR3/Flamingo Homolog 1 Antibody

Rabbit Polyclonal

Antigen Affinity Purified Protein ID Q9NYQ7.2

Catalog No. A305-188A GeneID 1951

Lot No. A305-188A-1



APPLICATIONS	IP
SPECIES REACTIVITY	Human
PRESUMED REACTIVITY	Based on 100% sequence identity, this antibody is predicted to react with Mouse and Rat
AMOUNT	100 µl
CONCENTRATION	1000 µg/ml
STORAGE/SHELF LIFE	2 - 8° C / 1 year from date of receipt
PHYSICAL STATE	Liquid
BUFFER	Tris-citrate/phosphate buffer, pH 7 to 8 containing 0.09% Sodium Azide
ISOTYPE	IgG
ORIGIN	USA
PRODUCTION PROCEDURES	Antibody was affinity purified using an epitope specific to CELSR3/Flamingo Homolog 1 immobilized on solid support.

The epitope recognized by A305-188A maps to a region between residue 3262 to 3312 of human Cadherin EGF LAG seven-pass G-type receptor 3 using the numbering given in entry Q9NYQ7.2 (GeneID 1951).

Antibody concentration was determined by extinction coefficient: absorbance at 280 nm of 1.4 equals 1.0 mg of IgG.

APPLICATIONS Centrifuge tube to remove product from lid. Optimal working dilutions should be determined experimentally by the investigator. Prepare working dilution immediately before use.

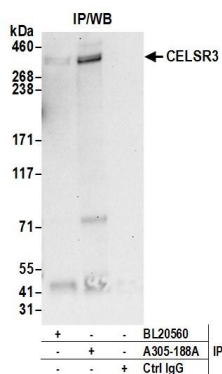
Western Blot Not recommended. A305-188A has not performed satisfactorily when used for WB of CELSR3/Flamingo Homolog 1 in crude preparations (e.g. whole cell lysate). This antibody can be used for WB of enriched (e.g. immunoprecipitated) sources of CELSR3/Flamingo H.

Immunoprecipitation 2 - 10 µg/mg lysate

APPLICATION NOTES Western blot of immunoprecipitates performed using Normal Pig Serum (Cat. No. S100-020), Goat anti-Rabbit Light Chain HRP Conjugate (Cat. No. A120-113P) and 3-8% SDS-PAGE (link to IP-western blot protocol in Additional Info section below).

ADDITIONAL INFO <https://www.bethyl.com/product/A305-188A>
Use the link above to view SDS, a current list of citations, and other product specific information.
IP-western blot protocol: https://www.bethyl.com/content/protocol_IP_WB

This document certifies that this product has met all of the quality control standards defined by Bethyl Laboratories, Inc.
Eric McIntush, PhD | Chief Scientific Officer Date: June 21, 2019



Detection of human CELSR3 by western blot of immunoprecipitates. *Samples:* Whole cell lysate (0.5 or 1.0 mg per IP reaction; 20% of IP loaded) from HeLa cells prepared using NETN lysis buffer. *Antibodies:* Affinity purified rabbit anti-CELSR3 antibody A305-188A (lot A305-188A-1) used for IP at 6 µg per reaction. CELSR3 was also immunoprecipitated by rabbit anti-CELSR3 antibody BL20560. For blotting immunoprecipitated CELSR3, A305-188A was used at 1 µg/ml. *Detection:* Chemiluminescence with an exposure time of 30 seconds.