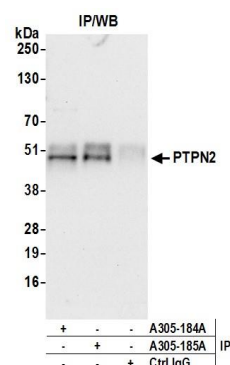


Detection of human PTPN2 by western blot. *Samples:* Whole cell lysate (50 µg) from HeLa, HEK293T, and Jurkat cells prepared using NETN lysis buffer. *Antibody:* Affinity purified rabbit anti-PTPN2 antibody A305-184A (lot A305-184A-1) used for WB at 0.1 µg/ml. *Detection:* Chemiluminescence with an exposure time of 10 seconds.



Detection of human PTPN2 by western blot of immunoprecipitates. *Samples:* Whole cell lysate (0.5 or 1.0 mg per IP reaction; 20% of IP loaded) from HeLa cells prepared using NETN lysis buffer. *Antibodies:* Affinity purified rabbit anti-PTPN2 antibody A305-184A (lot A305-184A-1) used for IP at 6 µg per reaction. PTPN2 was also immunoprecipitated by rabbit anti-PTPN2 antibody A305-185A. For blotting immunoprecipitated PTPN2, A305-184A was used at 1 µg/ml. *Detection:* Chemiluminescence with an exposure time of 10 seconds.