

MRPS36 Antibody

Rabbit Polyclonal

Antigen Affinity Purified

Protein ID P82909.2

Catalog No. A305-181A

GeneID 92259

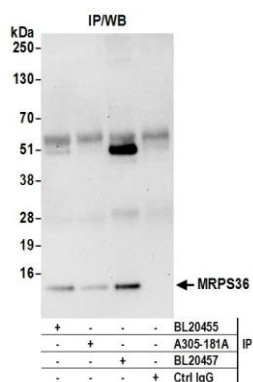
Lot No. A305-181A-1



APPLICATIONS	IP				
SPECIES REACTIVITY	Human				
PRESUMED REACTIVITY	Based on 100% sequence identity, this antibody is predicted to react with Mouse and Bovine				
AMOUNT	100 µl				
CONCENTRATION	1000 µg/ml				
STORAGE/SHELF LIFE	2 - 8° C / 1 year from date of receipt				
PHYSICAL STATE	Liquid				
BUFFER	Tris-citrate/phosphate buffer, pH 7 to 8 containing 0.09% Sodium Azide				
ISOTYPE	IgG				
ORIGIN	USA				
PRODUCTION PROCEDURES	<p>Antibody was affinity purified using an epitope specific to MRPS36 immobilized on solid support.</p> <p>The epitope recognized by A305-181A maps to a region between residue 53 to 103 of human 28S ribosomal protein S36, mitochondrial using the numbering given in entry P82909.2 (GeneID 92259).</p> <p>Antibody concentration was determined by extinction coefficient: absorbance at 280 nm of 1.4 equals 1.0 mg of IgG.</p>				
APPLICATIONS	<p>Centrifuge tube to remove product from lid. Optimal working dilutions should be determined experimentally by the investigator. Prepare working dilution immediately before use.</p> <table><tr><td>Western Blot</td><td>Not recommended. A305-181A has not performed satisfactorily when used for WB of MRPS36 in crude preparations (e.g. whole cell lysate). This antibody can be used for WB of enriched (e.g. immunoprecipitated) sources of MRPS36.</td></tr><tr><td>Immunoprecipitation</td><td>2 - 10 µg/mg lysate</td></tr></table>	Western Blot	Not recommended. A305-181A has not performed satisfactorily when used for WB of MRPS36 in crude preparations (e.g. whole cell lysate). This antibody can be used for WB of enriched (e.g. immunoprecipitated) sources of MRPS36.	Immunoprecipitation	2 - 10 µg/mg lysate
Western Blot	Not recommended. A305-181A has not performed satisfactorily when used for WB of MRPS36 in crude preparations (e.g. whole cell lysate). This antibody can be used for WB of enriched (e.g. immunoprecipitated) sources of MRPS36.				
Immunoprecipitation	2 - 10 µg/mg lysate				
APPLICATION NOTES	Western blot of immunoprecipitates performed using Normal Pig Serum (Cat. No. S100-020), Goat anti-Rabbit Light Chain HRP Conjugate (Cat. No. A120-113P) and 4-12% SDS-PAGE (link to IP-western blot protocol in Additional Info section below).				
ADDITIONAL INFO	<p>https://www.bethyl.com/product/A305-181A</p> <p>Use the link above to view SDS, a current list of citations, and other product specific information.</p> <p>IP-western blot protocol: https://www.bethyl.com/content/protocol_IP_WB</p>				

This document certifies that this product has met all of the quality control standards defined by Bethyl Laboratories, Inc.
Eric McIntush, PhD | Chief Scientific Officer

Date: June 21, 2019



Detection of human MRPS36 by western blot of immunoprecipitates. *Samples:* Whole cell lysate (0.5 or 1.0 mg per IP reaction; 20% of IP loaded) from HeLa cells prepared using NETN lysis buffer. *Antibodies:* Affinity purified rabbit anti-MRPS36 antibody A305-181A (lot A305-181A-1) used for IP at 6 µg per reaction. MRPS36 was also immunoprecipitated by a rabbit anti-MRPS36 antibodies BL20455 and BL20457. For blotting immunoprecipitated MRPS36, A305-181A was used at 1 µg/ml. *Detection:* Chemiluminescence with an exposure time of 30 seconds.