

# HIP1 /Huntingtin–interacting Protein 1 Antibody

Rabbit Polyclonal

Antigen Affinity Purified Protein ID O00291.5

Catalog No. A305–175A GeneID 3092

Lot No. A305–175A–1



<b>APPLICATIONS</b>	WB, IP
<b>SPECIES REACTIVITY</b>	Human
<b>AMOUNT</b>	100 µl
<b>CONCENTRATION</b>	1000 µg/ml
<b>STORAGE/SHELF LIFE</b>	2 – 8° C / 1 year from date of receipt
<b>PHYSICAL STATE</b>	Liquid
<b>BUFFER</b>	Tris–citrate/phosphate buffer, pH 7 to 8 containing 0.09% Sodium Azide
<b>ISOTYPE</b>	IgG
<b>ORIGIN</b>	USA
<b>PRODUCTION PROCEDURES</b>	Antibody was affinity purified using an epitope specific to HIP1 /Huntingtin–interacting Protein 1 immobilized on solid support.

The epitope recognized by A305–175A maps to a region between residue 725 to 775 of human Huntingtin–interacting protein 1 using the numbering given in entry O00291.5 (GeneID 3092).

Antibody concentration was determined by extinction coefficient: absorbance at 280 nm of 1.4 equals 1.0 mg of IgG.

**APPLICATIONS** Centrifuge tube to remove product from lid. Optimal working dilutions should be determined experimentally by the investigator. Prepare working dilution immediately before use.

Western Blot 1:10,000 – 1:25,000

Immunoprecipitation 2 – 10 µg/mg lysate

**APPLICATION NOTES** Western blot of immunoprecipitates performed using Normal Pig Serum (Cat. No. S100–020), Goat anti–Rabbit Light Chain HRP Conjugate (Cat. No. A120–113P) and 4–8% SDS–PAGE (link to IP–western blot protocol in Additional Info section below).

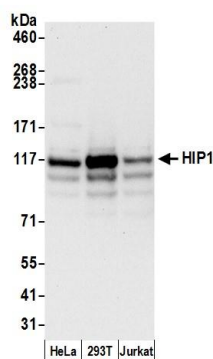
Western blot of lysates performed using standard western blot reagents and 4–8% SDS–PAGE.

**ADDITIONAL INFO** <https://www.bethyl.com/product/A305–175A>

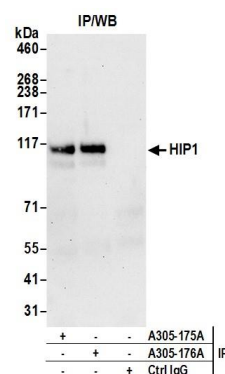
Use the link above to view SDS, a current list of citations, and other product specific information.

IP–western blot protocol: [https://www.bethyl.com/content/protocol\\_IP\\_WB](https://www.bethyl.com/content/protocol_IP_WB)

This document certifies that this product has met all of the quality control standards defined by Bethyl Laboratories, Inc.  
Eric McIntush, PhD | Chief Scientific Officer Date: June 21, 2019



**Detection of human HIP1 by western blot.** *Samples:* Whole cell lysate (50 µg) from HeLa, HEK293T, and Jurkat cells prepared using NETN lysis buffer. *Antibody:* Affinity purified rabbit anti-HIP1 antibody A305-175A (lot A305-175A-1) used for WB at 0.04 µg/ml. *Detection:* Chemiluminescence with an exposure time of 10 seconds.



**Detection of human HIP1 by western blot of immunoprecipitates.** *Samples:* Whole cell lysate (0.5 or 1.0 mg per IP reaction; 20% of IP loaded) from HeLa cells prepared using NETN lysis buffer. *Antibodies:* Affinity purified rabbit anti-HIP1 antibody A305-175A (lot A305-175A-1) used for IP at 6 µg per reaction. HIP1 was also immunoprecipitated by rabbit anti-HIP1 antibody A305-176A. For blotting immunoprecipitated HIP1, A305-175A was used at 1 µg/ml. *Detection:* Chemiluminescence with an exposure time of 30 seconds.