

# RC3H2/MNAB Antibody

Rabbit Polyclonal

Antigen Affinity Purified

Protein ID Q9HBD1.2

Catalog No. A305-149A

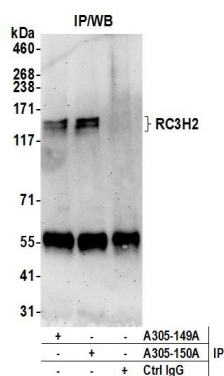
GeneID 54542

Lot No. A305-149A-1



<b>APPLICATIONS</b>	IP				
<b>SPECIES REACTIVITY</b>	Human				
<b>PRESUMED REACTIVITY</b>	Based on 100% sequence identity, this antibody is predicted to react with Mouse				
<b>AMOUNT</b>	100 µl				
<b>CONCENTRATION</b>	1000 µg/ml				
<b>STORAGE/SHELF LIFE</b>	2 – 8° C / 1 year from date of receipt				
<b>PHYSICAL STATE</b>	Liquid				
<b>BUFFER</b>	Tris-citrate/phosphate buffer, pH 7 to 8 containing 0.09% Sodium Azide				
<b>ISOTYPE</b>	IgG				
<b>ORIGIN</b>	USA				
<b>PRODUCTION PROCEDURES</b>	<p>Antibody was affinity purified using an epitope specific to RC3H2/MNAB immobilized on solid support.</p> <p>The epitope recognized by A305-149A maps to a region between residue 900 to 950 of human RING finger and CCCH-type zinc finger domain-containing protein 2 using the numbering given in entry Q9HBD1.2 (GeneID 54542).</p> <p>Antibody concentration was determined by extinction coefficient: absorbance at 280 nm of 1.4 equals 1.0 mg of IgG.</p>				
<b>APPLICATIONS</b>	<p>Centrifuge tube to remove product from lid. Optimal working dilutions should be determined experimentally by the investigator. Prepare working dilution immediately before use.</p> <table><tr><td>Western Blot</td><td>Not recommended. A305-149A has not performed satisfactorily when used for WB of RC3H2 in crude preparations (e.g. whole cell lysate). This antibody can be used for WB of enriched (e.g. immunoprecipitated) sources of RC3H2.</td></tr><tr><td>Immunoprecipitation</td><td>2 – 10 µg/mg lysate</td></tr></table>	Western Blot	Not recommended. A305-149A has not performed satisfactorily when used for WB of RC3H2 in crude preparations (e.g. whole cell lysate). This antibody can be used for WB of enriched (e.g. immunoprecipitated) sources of RC3H2.	Immunoprecipitation	2 – 10 µg/mg lysate
Western Blot	Not recommended. A305-149A has not performed satisfactorily when used for WB of RC3H2 in crude preparations (e.g. whole cell lysate). This antibody can be used for WB of enriched (e.g. immunoprecipitated) sources of RC3H2.				
Immunoprecipitation	2 – 10 µg/mg lysate				
<b>APPLICATION NOTES</b>	Western blot of immunoprecipitates performed using Normal Pig Serum (Cat. No. S100-020), Goat anti-Rabbit Light Chain HRP Conjugate (Cat. No. A120-113P) and 4-8% SDS-PAGE (link to IP-western blot protocol in Additional Info section below).				
<b>ADDITIONAL INFO</b>	<p><a href="https://www.bethyl.com/product/A305-149A">https://www.bethyl.com/product/A305-149A</a></p> <p>Use the link above to view SDS, a current list of citations, and other product specific information. IP-western blot protocol: <a href="https://www.bethyl.com/content/protocol_IP_WB">https://www.bethyl.com/content/protocol_IP_WB</a></p>				

This document certifies that this product has met all of the quality control standards defined by Bethyl Laboratories, Inc.  
Eric McIntush, PhD | Chief Scientific Officer Date: June 21, 2019



**Detection of human RC3H2 by western blot of immunoprecipitates.** *Samples:* Whole cell lysate (0.5 or 1.0 mg per IP reaction; 20% of IP loaded) from HeLa cells prepared using NETN lysis buffer. *Antibodies:* Affinity purified rabbit anti-RC3H2 antibody A305-149A (lot A305-149A-1) used for IP at 6 µg per reaction. RC3H2 was also immunoprecipitated by rabbit anti-RC3H2 antibody A305-150A. For blotting immunoprecipitated RC3H2, A305-149A was used at 0.4 µg/ml. *Detection:* Chemiluminescence with an exposure time of 3 minutes.